

SUBMITTAL DATA SHEET

SINGLE PACKAGE HEAT PUMP/GAS HEAT 16 SEER, 12 EER – R-410A – 2 THRU 5 TONS MODELS: PHG6*24 THRU 60 – 1 PHASE

JOB NAME:		LOCATION:	
PURCHASER:		ORDER NO:	
ENGINEER:			
SUBMITTED TO:	FOR:	REF:	APPROVAL: CONSTRUCTION:
SUBMITTED BY:		DATE:	
UNIT DESIGNATION:		SCHEDULE NO.	MODEL NO.

PRODUCT DATA

Cooling Performance	
Total Capacity _____	MBH
Sensible Capacity _____	MBH
Outdoor Design Temp _____	°F DB/WB
Total Supply Air _____	CFM
Temp. of Air Entering _____	
Evaporator Coil _____	°F DB/WB
Power Input Req. (Less blower motor) _____	kW
Heating Performance	
Gas Fired Heat Exchanger Input/Output Capacity _____	BTUH
Supply Air Blower Performance	
Total Supply Air _____	CFM
Total Resistance External to Unit _____	IWG
Blower Speed (Circle) _____	A B C D
Motor Rating _____	HP
Power Input Req. _____	Watts
Electrical Data	
Power Supply _____ / _____ / _____	
Total Unit Ampacity _____	Amps
Minimum Wire Size _____	AWG
Max. Overcurrent Device _____ Fuse _____ Circuit Breaker _____	Amps
Overcurrent Device <input type="checkbox"/> Fuses <input type="checkbox"/> Circuit Breaker	
Unit Weight	
Total Unit Weight (Operational) _____	lb

FEATURES

- All models are two-stage cooling, two-stage mechanical heating with two-stage gas heat backup.
- All models rated at 81% AFUE in gas heating, 16.0 SEER, 12.5 or 12.0 EER and 8.2 HSPF ratings for heat pump operation.
- All models meet California Low-Nox requirements of 40 ng/joule emission level for Air Quality Management Districts.
- Compact design cabinet with two footprints for installation flexibility.
- Easily convertible from side to bottom supply and return connections.
- Bottom and/or side electrical and gas utility connections.
- Unit cabinet is constructed of G90 powder painted steel, certified at 1000 hour salt spray test per ASTM-B-117 standards.
- Removable base rails with built-in rigging and shipping provisions.
- Attractive cabinet design with single-piece "watershed" top cover to extend cabinet life and deter water collection.
- All models have stamped slotted design coil guards for superior impact protection during transit and after installation.
- All models use an enhanced ECM indoor fan motor with slide out blower assembly.
- Demand defrost curves are pre-loaded into the demand defrost control for optimized performance based on unit capabilities.
- Compressor is internally protected against high pressure and temperature.
- Outdoor coils are constructed of rifled copper tubes and enhanced aluminum fin for long lasting durability and efficient operation.
- Indoor coils use tin-coated copper tubing with aluminum fins for effective heat transfer.
- Gas heat exchangers use corrosion-resistant, stainless-steel tubular construction for long-life, trouble-free operation.
- Post Purge Induced Draft exhausts combustion products from heat exchanger to prolong the heat exchanger life.
- Spark To Burner Ignition means no pilot assembly required, providing more consistent gas ignition.
- Long life, permanently lubricated indoor and outdoor fan motor bearings need no annual maintenance.
- Non-corrosive condensate pan internally sloped to meet strict requirements of ASHRAE 62-89 Indoor Air Quality standard.
- Individual access panels make servicing easy.

WARRANTY SUMMARY*

Extended 10-Years limited parts and compressor warranty
Lifetime gas heat exchanger warranty with registration.

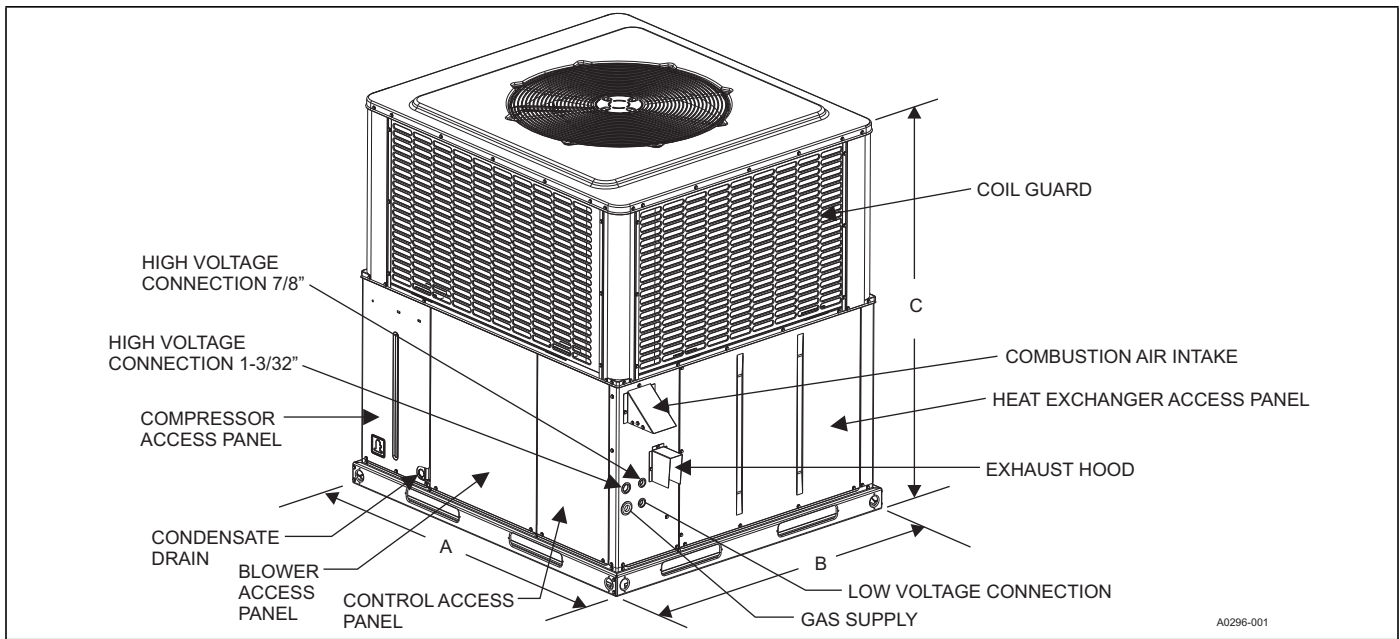
* Extended warranty requires online registration within 90 days of purchase for replacement or closing for new home purchase. See limited warranty certificate in User's Information Manual for details.

Unit Clearances^{1 2}

Direction	Distance (in.)	Direction	Distance (in.)
Top ³	36	Power Entry (Right Side)	36
Side Opposite Ducts	36	Left Side	24
Duct Panel	0	Bottom ⁴	1

1. A 1 in. clearance must be provided between any combustible material and the supply air duct work.
2. The products of combustion must not be allowed to accumulate within a confined space and recirculate.
3. Units must be installed outdoors. Overhanging structures or shrubs must not obstruct outdoor air discharge outlet.
4. Units may be installed on combustible floors made from class A, B, or C roof covering materials.

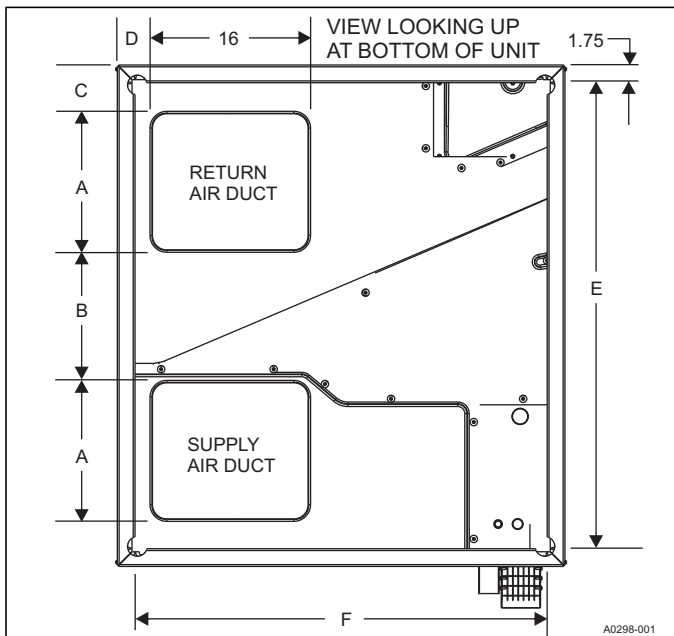




UNIT DIMENSIONS AND ACCESS LOCATIONS

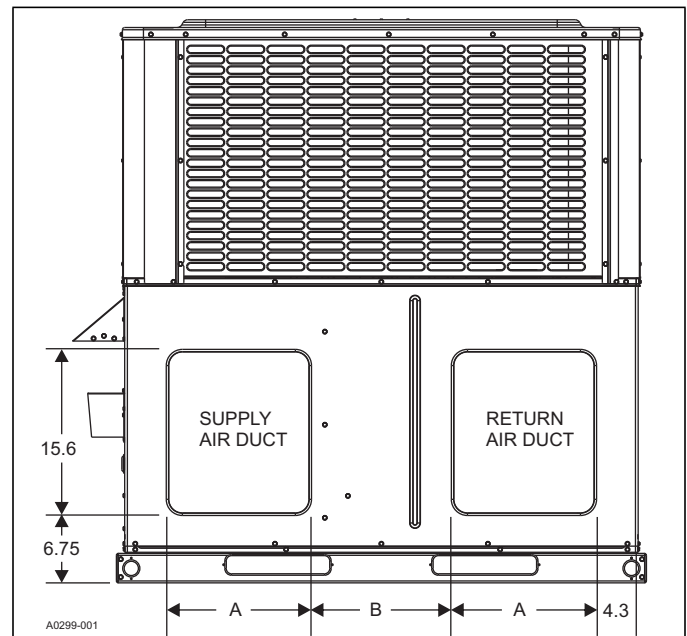
Model	Dimensions (in.)		
	A	B	C
PHG6A24	51-1/4	35-3/4	47
PHG6A30	51-1/4	35-3/4	49
PHG6B36	51-1/4	45-3/4	49
PHG6B42	51-1/4	45-3/4	49
PHG6B48	51-1/4	45-3/4	53
PHG6B60	51-1/4	45-3/4	55

BOTTOM DUCT DIMENSIONS (in.)



Model	A	B	C	D	E	F
24, 30	10	21.5	5	4.5	47.5	32
36, 42, 48, 60	14	13.5	5	3.5	47.5	42

REAR DUCT DIMENSIONS (in.)



Model	A	B
24, 30	9.6	22
36, 42, 48, 60	13.6	14

Subject to change without notice. Published in U.S.A.
 Copyright © 2019 by Johnson Controls. All rights reserved.

5332150-USD-B-0819
 Supersedes: 5332150-USD-A-0417

York International Corp.
 5005 York Drive
 Norman, OK 73069