

Application Selection and Cross-Reference Guide



Table Of Contents

PAGE

WATER HEATER PRODUCTS

Water Leak Alert	4
Water Heater Valves	6

GAS APPLIANCE PRODUCTS

Gas Valves	8
SmartValve™ System Controls	12
Universal Pilot Burners	16
Thermocouples/Thermopiles	20
Ignition Modules	22
Glowfly® Universal Hot Surface Igniter	26
Silicon Carbide Igniters	28
Universal Electronic Fan Timer	30
Universal Integrated Furnace Control	32
Fan and Limit Controls	38

OIL/HYDRONIC PRODUCTS

Oil Primaries	40
Outdoor Reset	44
Aquastats®	46
AquaPump	52

HEATING/COOLING PRODUCTS

Relays/Contactors/Transformers	54
--------------------------------	----

Universal Products

In the HVAC industry today time is money, particularly in the service department, and time lost is money lost. Every time your tech can't complete a job, you could lose money. Every time the tech has to head to the supply house, you could lose money. Every time the tech can't make it to that last call of the day because of extra trips to the supply house, you could lose money. Honeywell's Universal Product portfolio gives you more right parts for more right places. You and your techs complete more jobs, make fewer trips to the supply house, and can maximize your day—and your money.

The stocking recommendations included in this guide are shown by regional area, U.S. and Canada, and are averaged by product sales. They should be adjusted accordingly to your business size and needs.



**Universal
Product**

RESIDENTIAL COMBUSTION UNIVERSAL PRODUCTS RECOMMENDED INVENTORY GUIDE									
Product Line	Universal Service Part	U.S. NorthEast	U.S. Mid-Atlantic	U.S. North-NW	U.S. South-SE	U.S. West	Canada Eastern	Canada Central - West	Direct Service Part Replacement (Gas Valves)
		RECOMMENDED BRANCH INVENTORY							
Ignition Controls	S9200U1000	10	10	10	10	10	6	6	
	S8610U3009	24	24	24	12	12	24	24	
	S8910U3000	10	10	10	3	6	6	6	
	Y8610U4001	4	4	4	2	6			
	Y8610U6006	6	6	6	2	6	2	2	
Igniters	Q3200U1004	20	20	20	20	20	20	20	
	Q3200U2002	6	6	6	6	6	6	6	
Warm Air Limit	ST9120U10011	12	12	12	6	6	12	8	
Thermocouple	Q340A1090 (U.S.)	100	100	100	20	20	100	100	
	Q340A1439 (Canada)								
	VR8200A2322 (Canada)						6	10	
	VR8200H1236 (Canada)						12	12	
Gas Valves	VR8345M4302	12	12	12	6	8	8	12	VR8304M3509 VR8304M4507 VR8305M3506
	VR8300M4406	12	12	12	3	6	4	6	VR8300A4508 VR8300A3500
	VR8245M2530	3	3	6	2	2	6	8	VR8204A2076 VR8204M1091 VR8205A2024
	VR8345K4809	3	3	3	2	2	2	2	VR8205H1003 VR8304H4503
	VR8345Q4563	2	2	2	NA	NA	1	2	VR8205Q2555 VR8304Q4511 VR8305Q4500
	VS820M1309	6	6	6	NA	3	4 (VS820A1054)	6 (VS820A1054)	VS820A1054 VS820A1336
	L7224U1002	18	18	2	NA	NA	12	8	
	W8735Y1000	6	6	2	NA	NA	6	4	
	W8735S1008	6	6	2	NA	NA	6	4	
	Oil Controls	R7284U1004	10	10	4	NA	NA	12	4
Universal Pilot Burners	Q314U1001	12	6	12	6	12	12	12	
	Q345U1005	12	6	12	6	12	12	12	
	Q348U1009	12	6	12	6	12	12	12	
	Q3451U1000	12	6	12	6	12	12	12	

Water Leak Alert

Offer your customers peace of mind through audible alerts about water leaks. The Water Leak Alert notifies homeowners about potential leaks in their homes from gas storage water heaters.



Detection & Protection

The average water leak causes \$7000 in damage*. Audible alerts from the Water Leak Alert can help reduce a homeowner's risk of costly repairs. The Water Leak Alert can be hardwired to self-powered water heaters with Honeywell gas valves to turn the main burner off when a water leak is detected. That way, homeowners have a secondary alert if they don't hear the primary audible alert.



Cost-Effective

Perfect for homeowners who want a no-frills solution. The Water Leak Alert will audibly alert them at the first sign of a leak.



Expandable

The Water Leak Alert includes a 5-ft. water sensing cable that detects leaks across its entire length. Additional cables can be added for expanded coverage.



Fewer Callbacks

Battery operation makes maintenance easy for the homeowner.



Easy Upsell

Because homeowners are more aware of leaks when replacing a leaky water heater, they're more likely to purchase a Water Leak Alert with a new water heater and have it all installed at the same time.



Easy Setup

No special tools are required to set up the unit. Simply mount it to the side of the water heater or place by another water source prone to leaks.



Reusable

The water leak cable is reusable after detecting an incident.



*American Insurance Association

Product Features

Battery	2AA Alkaline (included)
Battery Life	Up to 5 years w/o incident
Dimensions	3.6"W x 3.6"H x 1.25"D
Weight	0.32 lbs
Cable Sensor Accessory	5 ft
Buzzer Alarm	100 dBA
Ingress Protection Rating	IP44*

Product	Model #
Water Leak Alert	WHLDT1000
Accessory Cable Sensor (4 ft)	CHWES41013

FEATURE HONEYWELL	WATER LEAK ALERT
Primary Notification	Audible Alarm
Secondary Notification	Stops heating water/Connect to Prestige® IAQ
Integrated with water heater (gas storage water heater)	Yes
Leak Sensor	Spot Sensor & Rope Sensor
Leak Coverage Area	Extended coverage – Can be increased up to 240 ft
Powered By	2AA (included)
Battery Life	5+ years
Shuts off Water Heater Burner	Yes
Installation	Easily mounted to water heater away from ground

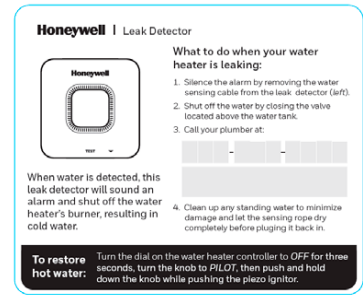
What's Included



Box
WHLDT1000



Water Leak Alert



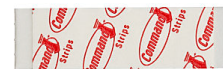
Homeowner Awareness Label



2 – AA batteries



5' Cable Sensor (1-included)
Extra cables available to purchase CHWES41013/U



Mounting Adhesive Tape

Water Heater Valves

Stock less. Sell more. With Honeywell WT8840 Water Heater Controls, only four models are needed to replace multiple AO Smith and Bradford White controls. You can consolidate your inventory while opening up more sales opportunities and capturing more business.

Plus, with the affordable cost and easy installation, you'll make more profits per job — all while delivering great value and quality for your customers!

Service Benefits



Simplify Truck Stock.

Service AO Smith and Bradford White natural gas water heaters.



Direct Purchasing

Order products straight from Honeywell for quicker turnaround times.

Product Highlights



Status LED

Trims repair time by up to 30 minutes.



Resettable Emergency Temperature Cutoff

Reduces cost and labor time by eliminating valve replacement.



Bigger Pilot Flame

Reduces customer callbacks.



Accurate Temperature Sensing

Improves comfort and eliminates scalding risk.



Anti-Scalding Algorithms

Protects children and elderly from water exceeding the setpoint.



AFTERMARKET SKUS	HONEYWELL PART NUMBER FOR OEM PART	OEM PRODUCTION PART NUMBERS	OEM SERVICE PART NUMBERS	OEM
WT8840A1000	WV8840A1000	222-47463-01A	239-47463-01 *	Bradford White
1" insulation, 4" WC setting	WV8840A1001	222-47463-01E	239-47463-01 *	Bradford White
WT8840A1500	WV8840A1050	222-47463-02A	239-47463-02 *	Bradford White
2" insulation, 4" WC setting	WV8840A1051	222-47463-02E	239-47463-02 *	Bradford White
WT8840B1000	WV8840B1042	316910-000	100112336 & 9007884005	AOSmith
1" insulation, 5" WC setting	WV8840B1109	316910-000	100112336 & 9007884005	AOSmith
	WV8840B1110	321166-000	100112336 & 9007884005	AOSmith
WT8840B1500	WV8840B1059	316910-001	100112337 & 9007885005	AOSmith
2" insulation, 5" WC setting	WV8840B1117	316910-001	100112337 & 9007885005	AOSmith
	WV8840B1118	321166-001	100112337 & 9007885005	AOSmith

Check insulation depth.

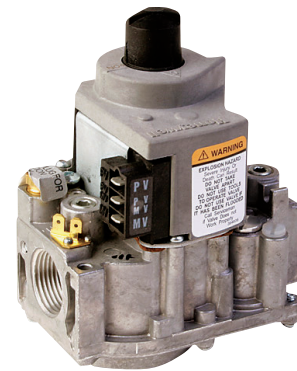
Gas Valves

Honeywell has taken the guesswork out of gas valve selection with our complete line of universal gas valves. Contractors appreciate the reliability, ease of installation and time saved by carrying a select few gas valves on their truck. Carrying a few Honeywell Universal gas valves on each truck reduces the amount of inventory needed while still making sure technicians can complete the job in one trip. Honeywell's tried and tested gas valves ensure you will be getting the best product available on the market, every time.

VR8345/VR8245

Universal Electronic Ignition Gas Valve

- Wide-capacity controls for almost any IP, HSI or DSI gas-fired appliances
- Compact fit simplifies field replacement
- Use with 24 Vac, 50/60 Hz, heating appliances, using natural, manufactured or LP gas
- Use the VR8345Q for a two-stage application, VR8345M for a standard and VR8345K for a slow-opening application
- Capacities from 20 to 200 (VR8245) cfh or 30 to 415 (VR8345) cfh natural gas
- Dual-redundant gas valve design



VR8215

Direct Ignition Gas Valve

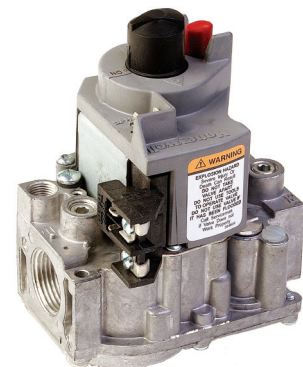
- Combination gas controls for use in 24 Vac, 50/60 Hz, direct ignition, gas fired appliances
- Capacities from 15 to 200 cfh natural gas
- VR8215S for a single stage standard opening application; VR8215T for a single stage slow opening application
- Multipoise – can be mounted in any direction
- 2.35 inch swing radius
- Dual-redundant gas valve



VR8300

Universal Standing Pilot Gas Valve

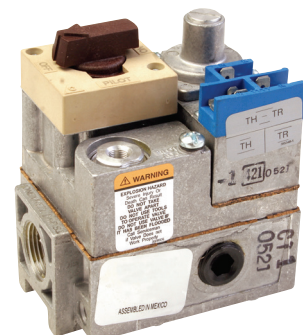
- Combination gas controls for use in 24 Vac, 50/60 Hz, gas-fired, standing pilot appliances with capacities from 30 to 300 cfh natural gas
- Includes safety shutoff, manual valve, two automatic operators, pressure regulator and pilot adjustment
- Universal replacement for most Honeywell and competitive standing pilot valve models
- Dual-redundant gas valve design



VS820

Millivolt Combination Gas Valve

- Self-powered automatic control
- Use with 750 mV pilot generator
- Easy to install and service with all the adjustments and connections accessible from the top of the control
- 34 to 425 cfh capacity



Gas Valves Selection Guide

TRADE REPLACEMENTS (Double-Check Specifications Before Replacement)		SPECIFICATIONS				ACCESSORIES					
Universal Service Part	Direct Service Part Replacement	Opening Characteristics (standard, step)	Inlet/Outlet Size (in.)	Pressure Regulator Setting (psi)	Temperature Range	Includes					
						Q340 Thermocouple	3/4" x 1/2" Reducer Bushing	Natural to LP Conversion Kit	3/4" Straight Flange	1/2" x 3/8" Reducer Bushing	Remote Rod Adapter
VR8345M4302	VR8345M4302	Standard	3/4 x 3/4	3.5 in. wc (0.87 kPa)	-40° to 175° F (-40° to 79° C)	None	Two	One	None	None	None
	VR8304M3509	Standard	1/2 x 3/4	3.5 in. wc (0.87 kPa)	-40° to 175° F (-40° to 79° C)	None	One	One	None	None	None
	VR8304M4507	Standard	3/4 x 3/4	3.5 in. wc (0.87 kPa)	-40° to 175° F (-40° to 79° C)	None	Two	One	None	None	None
	VR8305M3506	Standard	1/2 x 3/4	3.5 in. wc (0.87 kPa)	-40° to 175° F (-40° to 79° C)	None	One	One	One	None	None
VR8345K4809	VR8345K4809	Slow	3/4 x 3/4	3.5 in. wc (0.87 kPa)	-40° to 175° F (-40° to 79° C)	None	Two	One	None	None	None
	VR8205H1003	Slow	1/2 x 1/2	3.5 in. wc (0.87 kPa)	0° to 175° F (-18° to 79° C)	None	None	None	None	None	None
	VR8304H4503	Slow	3/4 x 3/4	3.5 in. wc (0.87 kPa)	0° to 175° F (-18° to 79° C)	None	None	One	None	None	None
VR8345Q4563	VR8345Q4563	2-Stage	3/4 x 3/4	1.7 in. wc Low Fire; 3.5 in. wc High Fire	-40° to 175° F (-40° to 79° C)	None	Two	One	None	None	None
VR8245M2530	VR8245M2530	Standard	1/2 x 1/2	3.5 in. wc (0.87 kPa)	-40° to 175° F (-40° to 79° C)	None	None	One	None	One	None
	VR8204A2076	Standard	1/2 x 1/2	3.5 in. wc (0.87 kPa)	0° to 175° F (-18° to 79° C)	None	None	One	One	One	None
	VR8204M1091	Standard	1/2 x 1/2	3.5 in. wc (0.87 kPa)	-40° to 175° F (-40° to 79° C)	None	None	One	One	One	None
	VR8205A2024	Standard	1/2 x 1/2	3.5 in. wc (0.87 kPa)	0° to 175° F (-18° to 79° C)	None	None	One	One	One	None
VR8215	VR8215S1503	Standard	1/2 x 1/2	3.5 in. wc (0.87 kPa)	-40° to 175° F (-40° to 79° C)	None	None	One	None	None	None
	VR8215T1502	Slow	1/2 x 1/2	3.5 in. wc (0.87 kPa)	-40° to 175° F (-40° to 79° C)	None	None	One	None	None	None
VR9205Q	VR9205Q1507	2-stage	1/2 x 1/2	1.7 in. wc (0.42 kPa) low; 3.5 in. wc (0.87 kPa) high	-40° to 175° F (-40° to 79° C)	None	None	One	None	None	None
VR8300M4406	VR8300M4406	Standard	3/4 x 3/4	3.5 in. wc (0.87 kPa)	-40° to 175° F (-40° to 79° C)	None	Two	One	None	None	None
	VR8300A4508	Standard	3/4 x 3/4	3.5 in. wc (0.87 kPa)	0° to 175° F (-18° to 79° C)	None	Two	One	None	None	None
	VR8300A3500	Standard	1/2 x 3/4	3.5 in. wc (0.87 kPa)	0° to 175° F (-18° to 79° C)	None	One	One	None	None	None
	VR8200A2124	Standard	1/2 x 1/2	3.5 in. wc (0.87 kPa)	0° to 175° F (-18° to 79° C)	One	None	One	One	One	None
	VR8200A2132	Standard	1/2 x 1/2	3.5 in. wc (0.87 kPa)	0° to 175° F (-18° to 79° C)	None	None	One	One	One	None
	VR8200A2744	Standard	1/2 x 1/2	3.5 in. wc (0.87 kPa)	0° to 175° F (-18° to 79° C)	None	None	One	One + One Elbow	One	None
VS820M1309	VS820M1309	Standard	3/4 x 3/4	3.5 in. wc (0.87 kPa)	-40° to 175° F (-40° to 79° C)	None	Two	One	None	One	Yes
	VS820A1054	Standard	3/4 x 3/4	3.5 in. wc (0.87 kPa)	32° to 175° F (0° to 79° C)	None	Two	None	None	One	None
	VS820A1336	Standard	3/4 x 3/4	10.0 in. wc (2.49 kPa)	32° to 175° F (0° to 79° C)	None	Two	None	None	One	None

Notes:

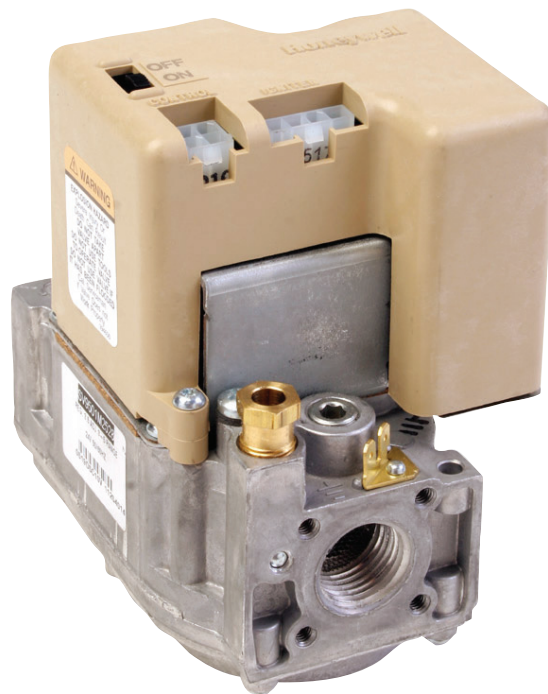
All piloted valves have a 1/4" compression fitting.
 All the VR valves come set for natural gas, but can be converted to LP gas.
 The VS820A1054 is for natural gas. The VS820A1336 is for LP gas.
 All the VR valves have inlet and outlet pressure taps. The VS820 valves have just an outlet pressure tap.

COMPETITIVE REPLACEMENT				
Universal Service Part	Direct Service Part Replacement	Honeywell	White-Rodgers	Robertshaw
VR8345M4302	VR8345M4302		36E36-304, 36C68-423, 36H32-423	
	VR8304M3509	VR8304M2501		
	VR8304M4507	VR8304M4002, VR8304M4804		
	VR8305M3506	VR8305M4066, VR8305M4165, VR8305M4231	36G22-214, 36C68-423	720-051 (7200DER)
VR8345K4809	VR8345K4809	VR8304K3808, VR8304K4806, VR8304K4814, VR8305K4233	36E98-304, 36E24-214, 36E52-214	700-052
	VR8205H1003	VR8205H2605, VR8305H4013, VR8305H4039		
	VR8304H4503	VR8204H1006, VR8204H1055		720-070 (7200IPER-S7C), 720-071 (7200IPER-S7C), 720-072 (7200IPER-S7C), 720-073 (7200IPER-LP-S7C)
VR8345Q4563	VR8345Q4563	VR8205Q2381, VR8205Q2555, VR8205Q2662, VR8205Q2746, VR8205Q2787, VR8304Q4453, VR8304Q4511, VR8305Q4138, VR8305Q4146, VR8305Q4195, VR8305Q4500	36C76-406, 36C76-420, 36C76-463 36D13-208, 36D13-405, 36E54-214, 36E96-314, 36G54-214	720-082 (7200IPER2-4)
VR8245M2530	VR8245M2530	VR8204A2852, VR8205M1080, VR8205M1106, VR8205M2310, VR8205M2443, VR8205M2450, VR8205M2476	36E36-304, 36E22-214	720-079 (7200IPER), 720-080 (7200IPER-LP) 722-079 (2000IPERHC)
	VR8204A2076	VR8204A1201, VR8204A1219, VR8204A2001, VR8204A2035, VR8204A2043, VR8204A2175, VR8204A2183, VR8204A2241, VR8204A2225, VR8204A2803		
	VR8204M1091	VR8204M1075, VR8204M1232	36E01-204, 36E01-205, 36E01-206, 36E01-305, 36E93-304	
	VR8205A2024	VR8205A2008, VR8205A2081	36G22-214, 36J22-214	722-051 (2000DERHC), 720-051
VR8215S1503	VR8215S1503	VR8205S2262, VR8205S2270, VR8205S2296, VR8205S2338, VR8205S2353, VR8205S2361, VR8205S2379, VR8205S2395, VR8205S2437, VR8205S2858, VR8205S2882, VR8205S5802, VR8205S5828, VR8205S5836, VR8205S5844, VR8215S1222, VR8215S1263, VR8215S5207, VR8215S5215, VR8205A2008, VR8205A2016, VR8205A2024, VR8205A2065, VR8205A2081, VR8205A2131, VR8205A2263, VR8205A2800, VR8205M1080, VR8205M1106, VR8205M1122, VR8205M1130, VR8205M1148, VR8205M1155, VR8205M1163, VR8205M2310, VR8205M2401, VR8205M2476, VR8205M2484, VR8205M2831, VR8205M2864, VR8205M2872, VR8205M2880, VR8205M5024, VR8205M5032	36G22-214, 36J22-214, 36G22-207, 36B22-254	
VR8215T1502	VR8215T1502	VR8205H1003, VR8205H1011, VR8205H2605, VR8205H2621, VR8205K1157, VR8205K1173, VR8205K2247, VR8205K2593, VR8205K2619, VR8205T5801, VR8215T1205, VR8215T1239, VR8215T5206, VR8215T5214		
VR9205Q	VR9205Q1507	VR9205Q1006, VR9205Q1010, VR9205Q1028, VR9205Q1101, VR9205Q1127, VR9205Q1218		
VR8300M4406	VR8300M4406	VR8300A4003, VR8300A4011, VR8300A4037, VR8200A2827 VR8300A4045, VR8300A4557, VR8300A4565	36C03-400, 36C03-433	700-400
	VR8300A4508	VR8300A4003, VR8300A4011, VR8300A4037, VR8300A4045, VR8300A4557, VR8300A4565	36C01-405	700-400, 720-406 (7200ER)
	VR8300A3500	VR8300A3104, VR8300A3120, VR8300A3153, VR8300A3161, VR8300A3203, VR8300A3559, VR8300A3567, VR8300A3575	36C03-300, 36C03-258	720-404 (7200ER), 720-400, 720-402
	VR8200A2124	VR8200A2009, VR8200A2082, VR8200A2116, VR8200A2215, VR8200A2264, VR8200A2322, VR8200A2348		720-400 (7200ER), 720-402 (7200ER)
				720-400 (7200ER), 720-402 (7200ER)
	VR8200A2132	VR8200A2009, VR8200A2082, VR8200A2116, VR8200A2215, VR8200A2264, VR8200A2322, VR8200A2348		
VR8200A2744	VR8200A2322			
VS820M1309	VS820M1309	VS820A1039, VS820A1807, VS820A1815, VS820A2003, VS820A2011	36C03U-300, 36C03U-333, 36C03U-400, 36C03U-433	
	VS820A1054	VS820A1005, VS820A1013, VS820A1047, VS820A1260, VS820A1278, VS820A1922, VS820A5204		
	VS820A1336	VS820A1120, VS820A1211, VS820A1740, VS820A1872, VS820A1898, VS820A1906		

For a complete cross-reference, visit www.customer.resideo.com

SmartValve™ System Controls

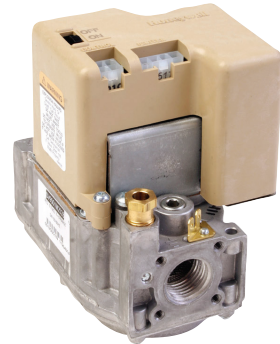
Honeywell SmartValve combines gas flow control and electronic ignition into a single unit, providing safety and simplified wiring and appliance construction. You'll find Honeywell SmartValves on equipment ranging from furnaces, water heaters, boilers and rooftops to infrared heaters, cooking units and much more.



SmartValve™

- Family members cover the full range of opening characteristics (slow, normal, fast) and ignition systems (hot surface, hot surface pilot)
- Universal kits include natural to LP conversion and 3/4" to 1/2" bushings
- Universal family increases service efficiency and reduces truck and warehouse inventory

* Diagnostic Testers
Input Voltage Harness: 396085
Flame current test tool: 32324947-00A

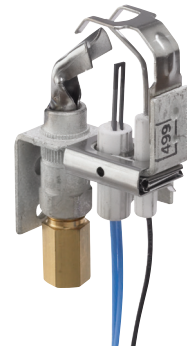


Q3450C1185/Q3450C2092

SmartValve Pilot Burner

The Q3450 SmartValve pilot burners provide pilot flame ignition and sensing for SmartValve intermittent pilot systems. They consist of replaceable igniter-flame rod assembly, bracket assembly, pilot target, ground electrode, orifice assembly, compression fitting and spring clip. The igniter lights the pilot burner. The flame rod proves the pilot flame and the pilot flame lights the main burner

- Used with SV9500/SV9600 SmartValve™ System.
- Replaceable Igniter-Flame Rod Assembly (Q3400A).
- Integral keyed plug provides quick, convenient connection of igniter and sensor to SV9500/SV9600.
- Q3450 has front or 20 degree right, left flame pattern.
- Natural and LP gas orifices available.
- Variety of target styles available.
- Variety of mounting brackets available.

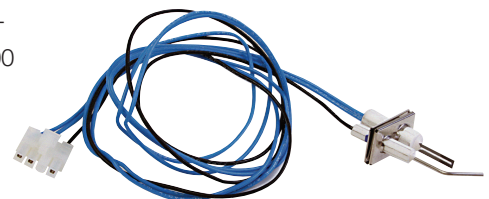


Q3400

Hot Surface Pilot/Sensor Assembly

The Q3400A Igniter-Flame Rod Assembly replaces the original igniter-flame rod assembly in the Q3450 and Q3480 pilot hardware used with the SV9500 and SV9600 SmartValve system. The Q3400A has a unique keyed plug connector that will only fit the SV9500/SV9600 systems.

- Can be replaced without removing the pilot burner
- Max temp 250° C
- Order SKU Q3400A1024



SmartValve™ Control Systems Selection Guide

		SPECIFICATIONS					
Ignition/Application	Universal Service Part	Gas Type	Opening Characteristics	Ambient Temperature Range	Includes		
					Natural to LP Conversion Kit	3/4" x 1/2" Reducer Bushings	Extension harness
Intermittent HSI Pilot with Combustion Air Control and Limit Monitoring Forced Air Furnace	SV9541Q2561	Natural	2-Stage	-40° to 175° F (-40° to 79° C)	Yes	None	No
	SV9641M4510		Standard Opening		Yes	Two	
Direct Ignition, General Application	SV9510M2511	Natural	Standard Opening	-40° to 175° F (-40° to 79° C)	Yes	None	No
	SV9520M2536						
	SV9510K2539		Slow Opening				
	SV9520H8513		Fast-Slow Opening	0° to 175° F (-18° to 79° C)			
Intermittent HSI Pilot, General Application	SV9601M4571	Natural	Standard Opening	-40° to 175° F (-40° to 79° C)	Yes	Two	No
	SV9501M2528					None	
	SV9501M8129		Fast-Fast				
	SV9502H2522		Slow Opening	0° to 175° F (-18° to 79° C)			
	SV9602P4816		Step Opening	-40° to 175° F (-40° to 79° C)	None	Two	Yes
	SV9602P4824						
	SV9602P4832						
	SV9602P4840						

SPECIFICATIONS		CROSS-REFERENCE
Universal Service Part	OEM Brands	Replaces
SV9541Q2561	ICP, Heil, Tempstar, Arcoaire, Comfortmaker, KeepRite	SV9540Q2464, SV9541Q3098
SV9641M4510	ICP, Heil, Tempstar, Arcoaire, Comfortmaker, KeepRite, Mestek, Slant/Fin	SV9541M2094, SV9540M2229, SV9540M2260, SV9640M4116, SV9640M4124, SV9540M2278, SV9540M2245, SV9640M3126, SV9640M4132
SV9510M2511	Modine	SV9510M2347, SV9510M2362, SV9410M2902, SV9510M2412, SV9510M2354, SV9410M2910, SV9510M2388, SV9510M2420
SV9520M2536		SV9420M2331, SV9520M2403, SV9420M2323
SV9510K2539	Roberts Gordon	SV9510H2228, SV9510K2133, SV9510K2158, SV9510K2141, SV9510K2166
SV9520H8513	Armstrong, Concord, AirEase	SV9520H8042, SV9520H8034, SV9520H8067, SV9520H8026
SV9601M4571		SV9601M4167, SV9601M3003, SV9601M4225
SV9501M2528	ICP, Heil, Tempstar, Arcoaire, Comfortmaker, KeepRite	SV9501M2056, SV9501M2080, SV9501M2718, SV9501M2726, SV9501M2031, SV9501M2049, SV9501M2239, SV9501M2700, SV9501M2734, SV9501M2742, SV9501M2064
SV9501M8129		SV9501M8103
SV9502H2522	Laars, Utica, Armstrong, Concord, AireEase	SV9501H3415, SV9501H2417, SV9501H2409, SV9502H1706, SV9502H2704, SV9501H3423, SV9501H2425
SV9602P4816	Burnham, ICP, Heil, Tempstar, Arcoaire, Comfortmaker, KeepRite	SV9501P2004, SV9601P4107, SV9501P2053, SV9502P2101, SV9602P4105
SV9602P4824	Burnham	SV9501P2087, SV9601P4172, SV9502P2127, SV9602P4121
SV9602P4832	Burnham	SV9501P2020, SV9501P2046, SV9601P4149, SV9601P4164, SV9502P2119, SV9502P2135, SV9602P4113, SV9602P4139
SV9602P4840		SV9601P4115

For a complete cross-reference, visit www.customer.resideo.com

Universal Pilot Burners

Honeywell has made replacing pilots easy with their new line of universal pilot burners. Now four pilots replace over 120 so you can finish the job on the first trip. Reduce costs and make more money with Honeywell Universal Pilots.

When selecting universal pilot burners for your next job, look for these Honeywell features:

- For use in Natural and LP applications
- Peel-N-Seal Packaging label with cross reference and installation instructions on outside of packaging

Q314U1001 Standing Pilot

- Target-style pilot burner
- Three position adjustable hood



Comes with:

- Natural and LP orifices (BCR-18, BBR-10)
- Low BTU Hood with low BTU orifices (CAR-12, CAR-13, BBR-8)
- 1/4" and 1/8" compression fitting
- A mounting adapter bracket

Q345U1005 Intermittent Pilot

- Target-style pilot burner
- Three position adjustable hood



Comes with:

- Natural and LP orifices (BCR-20, BCR-18, BBR-12, BBR-11)
- 1/4" and 1/8" compression fitting
- A mounting adapter bracket

Q348U1009 Intermittent Pilot

- 1" Batwing-style pilot burner



Comes with:

- Natural and LP orifices (NE22, KF24, A26, KR14)
- 1/4" and 1/8" compression fitting
- A Mounting adapter bracket

Q3451U1000 Intermittent Pilot

- Target-style pilot burner with integral ignition lead
- Three position adjustable hood



Comes with:

- Natural and LP orifices (BCR-20, BCR-18, BBR-12, BBR-11, BCR-10)
- 1/4" and 1/8" compression fitting
- Igniter with 36" lead length.
- Igniter with 55" lead length and fiberglass sleeve

Q314U1001 Cross Reference

Model Number	Hood	Hood Angle	Orifice	Gas Type	Compression Fitting	Auxiliary Bracket
Q314A3471	As Shipped	As Shipped (L) Left	As Shipped	NAT	1/8"	No
Q314A3513	As Shipped	(F) Front	As Shipped	NAT	As Shipped (1/4")	Yes
Q314A3547	As Shipped	As Shipped (L) Left	As Shipped	NAT	As Shipped (1/4")	Yes
Q314A3679	As Shipped	As Shipped (L) Left	As Shipped	NAT	As Shipped (1/4")	No
Q314A3687	As Shipped	(F) Front	As Shipped	NAT	As Shipped (1/4")	No
Q314A3703	As Shipped	As Shipped (L) Left	Green = BBR-10 (0.010 in.)	LP	As Shipped (1/4")	No
Q314A3729	As Shipped	(K) Right	As Shipped	NAT	As Shipped (1/4")	No
Q314A3737	As Shipped	(F) Front	As Shipped	NAT	As Shipped (1/4")	No
Q314A3802	As Shipped	(F) Front	Green = BBR-10 (0.010 in.)	LP	As Shipped (1/4")	No
Q314A3828	As Shipped	(F) Front	Green = BBR-10 (0.010 in.)	LP	As Shipped (1/4")	No
Q314A4586	As Shipped	(F) Front	Check Application	Check Application	As Shipped (1/4")	Check Application
Q314A6094	As Shipped	As Shipped (L) Left	Check Application	Check Application	As Shipped (1/4")	Check Application
Q314A6102	As Shipped	(K) Right	Check Application	Check Application	As Shipped (1/4")	Check Application
Q314A6557	As Shipped	(F) Front	As Shipped	NAT	As Shipped (1/4")	No
Q314A6631	As Shipped	(F) Front	As Shipped	NAT	1/8"	No
Q314A6862	As Shipped	(F) Front	Check Application	Check Application	Check Application	No
Q314A6946	As Shipped	As Shipped (L) Left	As Shipped	NAT	As Shipped (1/4")	No
Q314A6953	As Shipped	As Shipped (L) Left	Green = BBR-10 (0.010 in.)	LP	As Shipped (1/4")	No
Q314A6961	As Shipped	(K) Right	As Shipped	NAT	As Shipped (1/4")	No
Q314A9015	As Shipped	(K) Right	As Shipped	NAT	As Shipped (1/4")	Yes
Q314AFA	As Shipped	(F) Front	Check Application	Check Application	Check Application	Yes
Q314AFB	As Shipped	(F) Front	Check Application	Check Application	Check Application	No
Q314AFK	As Shipped	(F) Front	Check Application	Check Application	Check Application	No
Q314AKA	As Shipped	(K) Right	Check Application	Check Application	Check Application	Yes
Q314AKB	As Shipped	(K) Right	Check Application	Check Application	Check Application	No
Q314ALA	As Shipped	As Shipped (L) Left	Check Application	Check Application	Check Application	Yes
Q314ALB	As Shipped	As Shipped (L) Left	Check Application	Check Application	Check Application	No
Q314U1001	Check Application	Check Application	Check Application	Check Application	Check Application	Check Application
Q350A1065	Low BTU Hood	(F) Front	Pink = CAR-12 (0.012 in.)	NAT	As Shipped (1/4")	No
Q350A1222	Low BTU Hood	(L) Left	Pink = CAR-12 (0.012 in.)	NAT	As Shipped (1/4")	No
Q350A1271	Low BTU Hood	(K) Right	Lt blue = CAR-13 (0.013 in.)	NAT	As Shipped (1/4")	No
Q350A1305	Low BTU Hood	(K) Right	Pink = CAR-12 (0.012 in.)	NAT	As Shipped (1/4")	No
Q350A1321	Low BTU Hood	(L) Left	Pink = CAR-12 (0.012 in.)	NAT	As Shipped (1/4")	No
Q350A1545	Low BTU Hood	(L) Left	Pink = CAR-12 (0.012 in.)	NAT	As Shipped (1/4")	Yes
Q350A1644	Low BTU Hood	(L) Left	Pink = CAR-12 (0.012 in.)	NAT	1/8"	No
Q350A1677	Low BTU Hood	(L) Left	Pink = CAR-12 (0.012 in.)	NAT	1/8"	No
Q350A1859	Low BTU Hood	(K) Right	Yellow = BBF-8 (0.008 in.)	LP	As Shipped (1/4")	No
Q350A1867	Low BTU Hood	(L) Left	Yellow = BBF-8 (0.008 in.)	LP	As Shipped (1/4")	Yes
Q350A2097	Low BTU Hood	(F) Front	Lt blue = CAR-13 (0.013 in.)	NAT	As Shipped (1/4")	No
Q350A2212	Low BTU Hood	(F) Front	Pink = CAR-12 (0.012 in.)	NAT	As Shipped (1/4")	No
Q350A2287	Low BTU Hood	(K) Right	Check Application	Check Application	Check Application	Yes
Q350AFB	Low BTU Hood	(F) Front	Check Application	Check Application	Check Application	No
Q350AFK	Low BTU Hood	(F) Front	Check Application	Check Application	Check Application	No
Q350AKA	Low BTU Hood	(K) Right	Check Application	Check Application	Check Application	Yes
Q350AKB	Low BTU Hood	(K) Right	Check Application	Check Application	Check Application	No
Q350AKK	Low BTU Hood	(K) Right	Check Application	Check Application	Check Application	No
Q350ALA	Low BTU Hood	(L) Left	Check Application	Check Application	Check Application	Yes
Q350ALB	Low BTU Hood	(L) Left	Check Application	Check Application	Check Application	No
Q350ALK	Low BTU Hood	(L) Left	Check Application	Check Application	Check Application	No

Colors refer to the color of the label on the bag.

Universal Pilot Burners Cross Reference

Q345U1005 Cross Reference

Model Number	Hood Angle:	Orifice:	Gas Type	Compression Fitting	Auxiliary Bracket
Q345A1008	As Shipped (L) Left	Orange = BCR-18 (0.018 in.)	NAT	As Shipped (1/4")	No
Q345A1016	As Shipped (L) Left	Gray = BBR-12 (0.012 in.)	LP	As Shipped (1/4")	No
Q345A1024	(F) Front	Orange = BCR-18 (0.018 in.)	NAT	As Shipped (1/4")	No
Q345A1065	(F) Front	Orange = BCR-18 (0.018 in.)	NAT	As Shipped (1/4")	Yes
Q345A1156	(F) Front	As Shipped	NAT	As Shipped (1/4")	No
Q345A1305	(F) Front	Orange = BCR-18 (0.018 in.)	NAT	As Shipped (1/4")	Check Application
Q345A1313	As Shipped (L) Left	Orange = BCR-18 (0.018 in.)	NAT	As Shipped (1/4")	Check Application
Q345A1321	(K) Right	Orange = BCR-18 (0.018 in.)	NAT	As Shipped (1/4")	Check Application
Q345A1446	As Shipped (L) Left	Red = BBR-11 (0.011 in.)	LP	As Shipped (1/4")	Yes
Q345A1701	(F) Front	Orange = BCR-18 (0.018 in.)	NAT	As Shipped (1/4")	No
Q345A1750	(F) Front	Orange = BCR-18 (0.018 in.)	NAT	1/8"	No
Q345A1818	As Shipped (L) Left	Orange = BCR-18 (0.018 in.)	NAT	1/8"	No
Q345A2030	As Shipped (L) Left	As Shipped	NAT	As Shipped (1/4")	No
Q345A2055	(F) Front	As Shipped	NAT	As Shipped (1/4")	No
Q345A2196	As Shipped (L) Left	As Shipped	NAT	As Shipped (1/4")	Yes
Q345A2360	As Shipped (L) Left	Orange = BCR-18 (0.018 in.)	NAT	As Shipped (1/4")	No
Q345A2386	As Shipped (L) Left	Red = BBR-11 (0.011 in.)	LP	As Shipped (1/4")	No
Q345A2402	As Shipped (L) Left	As Shipped	NAT	As Shipped (1/4")	No
Q345A2816	As Shipped (L) Left	Orange = BCR-18 (0.018 in.)	NAT	As Shipped (1/4")	No
Q345A2824	As Shipped (L) Left	Gray = BBR-12 (0.012 in.)	LP	As Shipped (1/4")	No
Q345AFA	(F) Front	Check Application	Check Application	Check Application	Yes
Q345AFB	(F) Front	Check Application	Check Application	Check Application	No
Q345AFK	(F) Front	Check Application	Check Application	Check Application	No
Q345AKB	(K) Right	Check Application	Check Application	Check Application	No
Q345ALA	As Shipped (L) Left	Check Application	Check Application	Check Application	Yes
Q345ALB	As Shipped (L) Left	Check Application	Check Application	Check Application	No
Q345U1005	Check Application	Check Application	Check Application	Check Application	Check Application

Q348U1009 Cross Reference

Model Number	Orifice	Gas Type	Compression Fitting	Auxiliary Bracket
Q348A1002	As Shipped	NAT	As Shipped (1/4")	No
Q348A1010	Brown = KR14 (0.014 in.)	LP	As Shipped (1/4")	No
Q348A1101	As Shipped	NAT	As Shipped (1/4")	Yes
Q348A1226	Blue = A26 (0.026 in.)	NAT	As Shipped (1/4")	No
Q348A1275	White = KF24 (0.024 in.)	NAT	1/8"	No
Q348A1333	As Shipped	NAT	1/8"	No
Q348A1341	Brown = KR14 (0.014 in.)	LP	1/8"	No
Q348AAA	Check Application	Check Application	Check Application	Yes
Q348AAB	Check Application	Check Application	Check Application	No
Q348U1009	Check Application	Check Application	Check Application	Check Application

Colors refer to the color of the label on the bag.

Q3451U1000 Cross Reference

Model Number	Hood Angle	Orifice	Gas Type	Compression Fitting	Igniter Lead
Q3451B1004	(L) Left	Orange = BCR-18 (0.018 in.)	NAT	As Shipped (1/4")	As Shipped (36" igniter)
Q3451B1079	As Shipped (F) Front	Purple = BCR-10 (0.010 in.)	LP	As Shipped (1/4")	As Shipped (36" igniter)
Q3451B1095	As Shipped (F) Front	Orange = BCR-18 (0.018 in.)	NAT	As Shipped (1/4")	As Shipped (36" igniter)
Q3451B1103	(L) Left	Orange = BCR-18 (0.018 in.)	NAT	As Shipped (1/4")	55" igniter lead packed seperately
Q3451B1178	(L) Left	Orange = BCR-18 (0.018 in.)	NAT	As Shipped (1/4")	55" igniter lead packed seperately
Q3451B1186	As Shipped (F) Front	Orange = BCR-18 (0.018 in.)	NAT	As Shipped (1/4")	55" igniter lead packed seperately
Q3451B1194	As Shipped (F) Front	Purple = BCR-10 (0.010 in.)	LP	As Shipped (1/4")	55" igniter lead packed seperately
Q3451B1236	(L) Left	Gray = BBR-12 (0.012 in.)	LP	As Shipped (1/4")	55" igniter lead packed seperately
Q3451B1244	(L) Left	Orange = BCR-18 (0.018 in.)	NAT	As Shipped (1/4")	55" igniter lead packed seperately
Q3451B1301	(L) Left	As Shipped (BCR-20 (0.020 in))	NAT	As Shipped (1/4")	As Shipped (36" igniter)
Q3451B1707	(L) Left	Red = BBR-11 (0.011 in.)	LP	As Shipped (1/4")	As Shipped (36" igniter)
Q3451B1715	(L) Left	Check Application	Check Application	As Shipped (1/4")	As Shipped (36" igniter)
Q3451B2002	As Shipped (F) Front	Orange = BCR-18 (0.018 in.)	NAT	As Shipped (1/4")	As Shipped (36" igniter)
Q3451B2010	As Shipped (F) Front	Orange = BCR-18 (0.018 in.)	NAT	1/8"	As Shipped (36" igniter)
Q3451B2036	As Shipped (F) Front	Orange = BCR-18 (0.018 in.)	NAT	As Shipped (1/4")	As Shipped (36" igniter)
Q3451B2044	As Shipped (F) Front	Orange = BCR-18 (0.018 in.)	NAT	As Shipped (1/4")	55" igniter lead packed seperately
Q3451B2077	As Shipped (F) Front	As Shipped (BCR-20 (0.020 in))	NAT	As Shipped (1/4")	As Shipped (36" igniter)
Q3451B2085	As Shipped (F) Front	Gray = BBR-12 (0.012 in.)	LP	As Shipped (1/4")	As Shipped (36" igniter)
Q3451B2101	As Shipped (F) Front	Orange = BCR-18 (0.018 in.)	NAT	As Shipped (1/4")	55" igniter lead packed seperately
Q3451B3018	(K) Right	Orange = BCR-18 (0.018 in.)	NAT	As Shipped (1/4")	As Shipped (36" igniter)
Q3451B3026	(K) Right	Orange = BCR-18 (0.018 in.)	NAT	1/8"	As Shipped (36" igniter)
Q3451B3067	(K) Right	Orange = BCR-18 (0.018 in.)	NAT	As Shipped (1/4")	As Shipped (36" igniter)
Q3451B3083	(K) Right	Orange = BCR-18 (0.018 in.)	NAT	As Shipped (1/4")	As Shipped (36" igniter)
Q3451BF	As Shipped (F) Front	Check Application	Check Application	Check Application	Check Application
Q3451BK	(K) Right	Check Application	Check Application	Check Application	Check Application
Q3451BL	(L) Left	Check Application	Check Application	Check Application	Check Application
Q3451K2002	As Shipped (F) Front	As Shipped (BCR-20 (0.020 in))	NAT	As Shipped (1/4")	55" igniter lead packed seperately
Q3451K2010	As Shipped (F) Front	Gray = BBR-12 (0.012 in.)	LP	As Shipped (1/4")	55" igniter lead packed seperately
Q3451K2028	As Shipped (F) Front	As Shipped (BCR-20 (0.020 in))	NAT	As Shipped (1/4")	55" igniter lead packed seperately
Q3451KF	As Shipped (F) Front	Check Application	Check Application	Check Application	Check Application
Q3451U1000	Check Application	Check Application	Check Application	Check Application	Check Application

Colors refer to the color of the label on the bag.

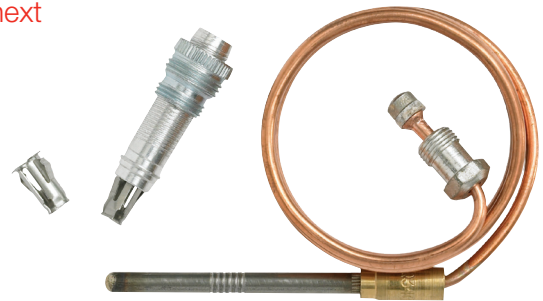
For a complete cross-reference, visit www.customer.resideo.com

Thermocouples/Thermopiles

Contractors depend on Honeywell for easy installation and reliable performance. Built for long service life, the Honeywell Q313U, Q340A and Q390A will work for nearly all pilot generated millivolt applications.

When selecting a thermocouple or thermopile for your next job, look for these Honeywell features:

- Variety of lead lengths
- Easy installation
- Many accessories included
- Durability



Thermocouple and Thermopile Selection Guide

THERMOCOUPLES						
Lead Length (in.)	Universal	Tradeline	Cross-Reference			
			White-Rodgers	Robertshaw	Husky	Johnson Controls
18	Q340A1066	Q390A1095	H06E-518, H06E-18	1970-18	K16BT-18	K19AT-18
24	Q340A1074	Q390A1046	H06E-524, H06E-24	1970-24, 1980-24	K16BT-24	K19AT-24
30	Q340A1082	Q390A1053	H06E-530, H06E-30	1970-30	K16BT-30	K19AT-30
36	Q340A1090	Q390A1061	H06E-536, H06E-36	1970-36, 1980-36	K16BT-36	K19AT-36
48	Q340A1108	Q390A1103	H06E-548, H06E-48	1970-48	K16BT-48	K19AT-48

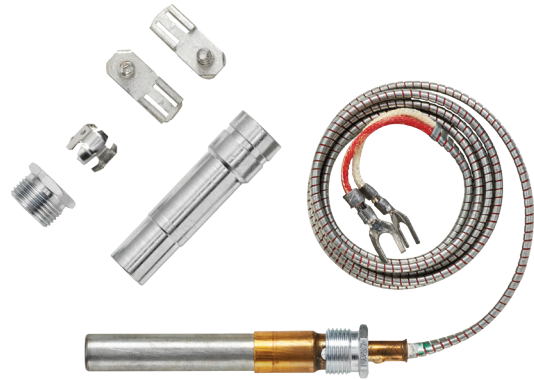
THERMOPILES				
Lead Length (in.)	Universal	Direct Replacement	Connection	Includes
35	Q313U3000	Q313U3000	Spade Terminal	Push-In clip, PG9 adapter, 1/2" attaching nut, Split nut, spade to QC adapter"
		Q313A1022		7/16" attaching nut
		Q313A1139		Push-In clip, spade to QC adapter
		Q313A1170		PG9 adapter, 7/16" attaching nut
		Q313A1188		Push-In clip, 1/2" attaching nut, Split nut, Spade to QC adapter
47	Q313A1055	Q313A1055		1/2" attaching nut, 7/16" attaching nut

For a complete cross-reference, visit www.customer.resideo.com

Q313

Replacement Thermopile

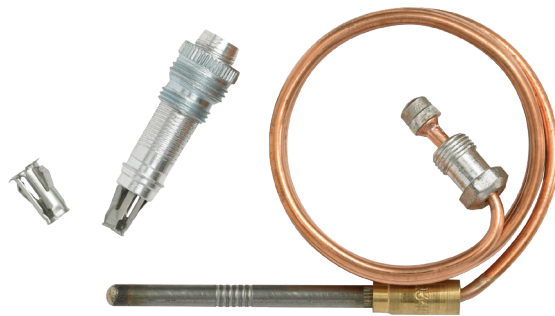
- Variety of lead lengths
- Push-in clip, split nut and adapter assembly included
- Male nut connector for Pilotstat included
- Generates 750 mV in a millivolt heating system



Q340A

Universal Thermocouple

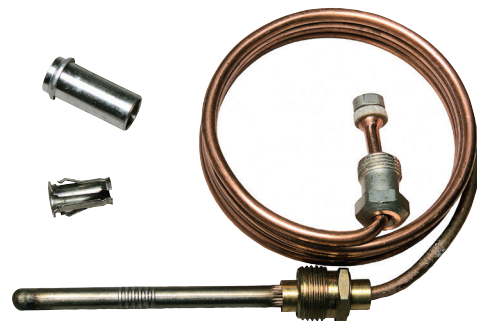
- The Q340A, with a maximum amount of copel, is a premium thermocouple with the long life and durability that your customers demand
- Variety of lead lengths
- Push-in clip and adapter assembly included
- Male nut connector for Pilotstat included
- Generates 30 mV in standing pilot systems



Q390A

Thermocouple

- Variety of lead lengths
- Push-in clip and adapter assembly included
- Male nut connector for Pilotstat included
- Generates 30 mV in standing pilot systems
- For situations where a utility grade thermocouple is the best solution, the Q390A is the right choice

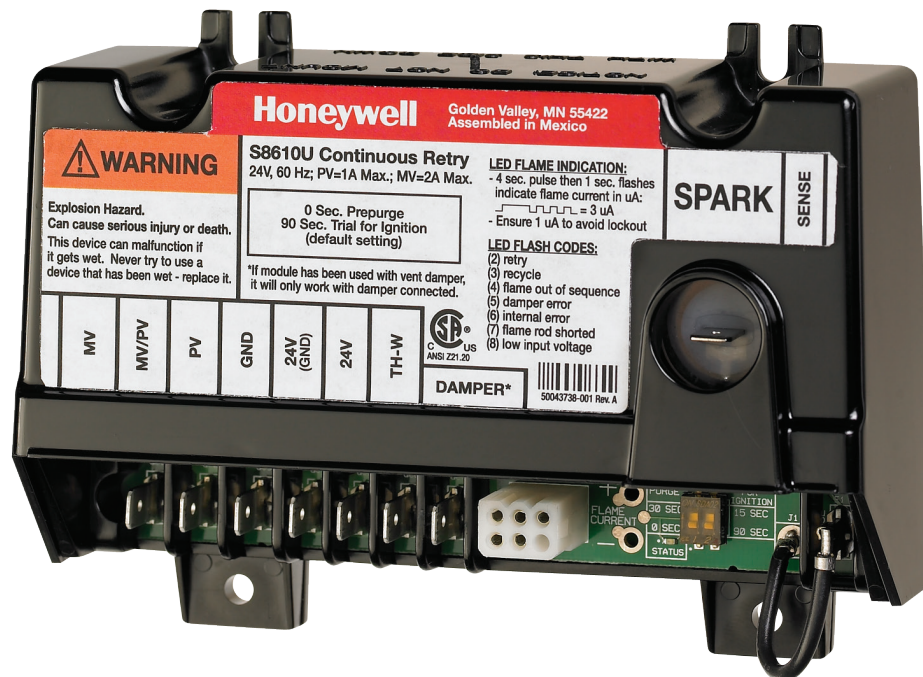


Ignition Modules

Honeywell ignition controls have a long history of safe and reliable performance. Grow your business while reducing inventory with Universal ignition modules. A full lineup of Universal replacement electronic control is available for nearly all intermittent or hot surface ignition applications from gas-fired furnaces to boilers.

When selecting ignition modules for your next job, look for these Honeywell features:

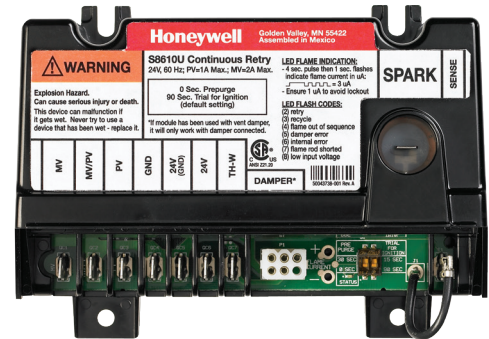
- Universal application with field adjustable timings
- Flexibility for use in single-rod or dual-rod systems
- Quality, reliability and safety of field proven controls
- Simplified installation



S8610U

Universal Intermittent Pilot Ignition Module

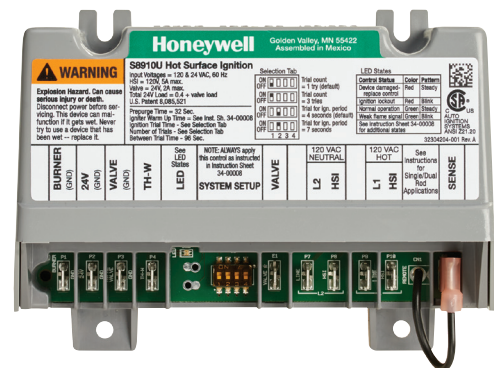
- Flame voltage auto-adjusts for consistent operation
- Usable in both single-rod or dual-rod systems
- Field-selectable pre-purge and ignition trial timings
- Simple diagnostic LED helps direct service effort
- Direct pilot flame current readout with standard micro-ammeter
- Plug in vent damper connection simplifies installation
- Replaces over 400 Honeywell and competitive models



S8910U

Universal Hot Surface Ignition Module

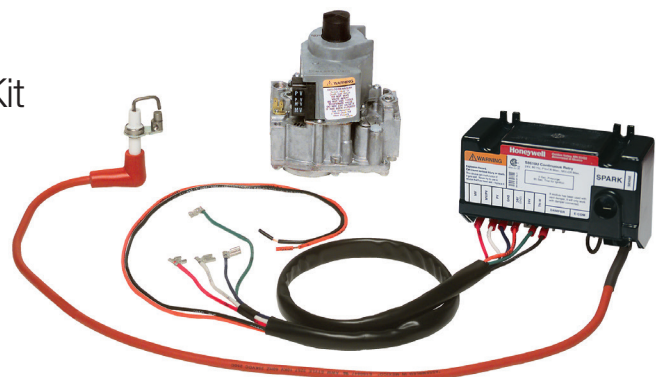
- Replaces over 800 Honeywell and competitive products
- Easy field replacement for most hot surface ignition modules
- Three-color LED and microammeter ports for easy diagnostics
- Single-rod or dual-rod systems
- Natural or LP gas
- All retrofit accessories included



Y8610U

Universal IP Retrofit Ignition System Kit

- Use with 24 Vac gas-fired atmospheric furnaces, boiler and heating appliances
- Convert standing pilot appliance to electronic ignition
- Natural or LP gas



Ignition Modules Selection Guide

Universal Service Part	APPLICATIONS			TIMINGS				
	Ignition System	Flame Sensor	Ignition Sequence (Note 1)	Ignition Trials To Lockout (Note 1)	Ignition Trial Time	Between Trial Time	Pre-Purge	Flame Failure Response Time
S8910U3000	Line Volt Hot Surface Ignition	1 or 2 Rods	P	1 or 3 Field Selectable	4 sec. or 7 sec. Field Selectable	96 sec., 3 Trial Mode Only	32 sec or less	1.5 sec.
S8610U3009	Intermittent Pilot	1 or 2 Rods	C	C	15 sec. or 90 sec. Field Selectable	5 Minute Delay After Failed Trial for Ignition	0 sec. or 30 sec. Field Selectable	2.0 sec. max.
Y8610U6006	Conversion for Standing Pilot	Single Rod	C	C	15 sec. or 90 sec. Field Selectable	5 Minute Delay After Failed Trial for Ignition	0 sec.	2.0 sec. max.
Y8610U4001	Conversion for Standing Pilot	Single Rod	C	C	15 sec. or 90 sec. Field Selectable	5 Minute Delay After Failed Trial for Ignition	0 sec.	2.0 sec. max.

Notes:

1. Ignition Sequence

C

Continuous retry — After trial for ignition, pilot gas shuts off for five minutes, then another trial for pilot ignition takes place.

P

The number of trials for ignition and trial time is determined by the selection tab. If a selection tab is not installed, the module will operate at four seconds trial time and one ignition trial.

FEATURES AND FUNCTIONS					CROSS-REFERENCE			
Universal Service Part	Type of Gas	Ignition Source	Typical Ignition Hardware	Includes	Honeywell	White-Rodgers	Robertshaw	Johnson Controls
S8910U3000	Nat or LP	Switched Line Voltage	Norton 201, Norton 271, Hot Surface Elements, Q354 Flame Rod		S89C1004, S89C1012, S89C1046, S89C1087, S89C1103, S89D1002, S89G1005, S89G1013, S89G1021, S89G1047, S89H1003, S89H1011, S89H1029, S89J1008, S890C1007, S890D1006, S890G1003, S890G1011, S890G1029, S890G1037, S890H1002, S890H1010, S890H1028, S8910U1000	50E47-1 thru 50E47-79, 50E47-101 thru 50E47-179, 50E47-201 thru 50E47-279, 50E47-301 thru 50E47-379, 50F47-1 thru 50F47-79, 50F47-101 thru 50F47-179, 50F47-201 thru 50F47-279, 50F47-301 thru 50F47-379	HS780-17NL-104A, HS780-17NL-108A, HS780-17NL-304A, HS780-17NL-308A, HS780-17NR-104A, HS780-17NR-306A, HS780-17NR-308A, HS780-34NL-108A, HS780-34NL-304A, HS780-34NL-306A, HS780-34NL-308A, HS780-34NL-312A, HS780-34NR-104A, HS780-34NR-306A, HS780-34NR-308A, HS780-34NR-312A, HS780-34PL-308A	
S8610U3009	Nat or LP	Internal	Q345, Q3451, Q3452	Integral Damper Connector	S86 Series, S90 Series, S8600 Series, S8610 Series, S8620 Series, S8660 Series, S8670 Series, S8680 Series	50D49-350, 50D49-360, 50D49-361, 50D50-843, 50D49-401	780-002, 780-003, 780-715, 780-735, 780-736, 780-737, 780-845, SP715, SP715A, SP735D, SP735L, USI715U, SP735, SP750 Series	CSA42, 43, 44, 45, 46, 48, 49, G60, G65, G67, G770 Series
Y8610U6006	Nat or LP	Internal	Adapter for Pilot Burner Included	VR8304M3558 gas valve	Y8610U3003			
Y8610U4001	Nat or LP	Internal	Adapter for Pilot Burner Included	VR8204A2142 gas valve				

For a complete cross-reference, visit www.customer.resideo.com

Universal Hot Surface Igniter

Replacing a hot surface igniter can be a tricky job. Furnace designs and specifications change. Appliance designs can be tight and difficult to maneuver in. Then there's the need to carry a variety of replacement parts to match the range of hot surface igniter configurations out there. Now, those challenges have one reliable solution: Glowfly® from Honeywell.

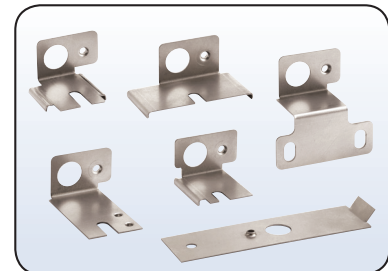
When selecting an igniter for your next job, look for these Honeywell features:

- Next-generation OEM silicon nitride quality for any installation
- Custom designed bracketing for universal installation
- 3-year warranty
- Avoid being caught unprepared with the unique truck-ready six-pack
- Graphic instructions provide for quick and accurate bracket selection and installation



Match and mount simplicity.

Simply remove the old igniter and compare it with the diagrams on Glowfly's unique packaging guide to determine the correct mounting bracket for the job.



Six brackets. 110+ possibilities.

Every Glowfly comes fully equipped with six custom mounting brackets that are optimized to replace over 110 igniter applications from nearly every furnace manufacturer without modification.

Q3200U2002

Six Pack

Q3200U1004

Single Pack

Igniter Bracket Replacement Cross Reference^a

MANUFACTURER	OEM #	Q3200U BRACKET ^b
American Road Equip.	201W	A
Arco Air	1096048	D
	1380680	
Armstrong Air	38322B001	A
Carrier/ Bryant/ Payne	LH33ZS001	B or E ^c
	LH33ZS001A	
	LH33ZS002	
	LH33ZS002A	
	LH33ZS003	
	LH33ZS003A	
Claire Bros.	C-238	A
	C242	
Coleman	1474-051	A
	1474-052	
Comfort Maker	1096048	D
Detroit Radiant	201D	A
DMO Ind.	20834	A
Dornback Furnace	271W	A
Ducane	20015201	B
Enero Tech	10399	A
Evcon	1474-051	A
	1474-052	
Evcon Coleman	025-32625-000	B
Goodman	B1401009	D
	B1401018	C
	B1401018S	D
HB Smith	50018	A
Heil	1096048	D
Hupp Industries	09050	A
Intercity	1009604	D
	1096048	
Majestic	75-92-104	A
	75-92-105	
Metzger	201N	A
	201W	

MANUFACTURER	OEM #	Q3200U BRACKET ^b	
Modine	5H76032A	C	
Mor-Flo	3200618	A	
	511-330-193	B	
Nordyne	105141000	A	
	632-0770		
	632-0880		
Norton/St Gobain	201	B	
	271		
	201D	A	
	201K		
	201L		
	201N		
	201R		
	201W		
	271N		
	271NM		D
	271P		A
	271W		
	Raypak	600915	B
	Rheem	62-22441-01	A
Roberts Gordon	90434300	B	
	90436600	A	
Robertshaw	41-402	A	
	41-403	B	
	41-404	B	
	41-405	A	
	41-407	B	
	41-408	A	
	41-409	B	
	41-410	A	
	41-412	D	
	41-418	C	
	Snyder General	1380654	B
1380672			
Superior Fireplace	94851	A	

MANUFACTURER	OEM #	Q3200U BRACKET ^b
Tempstar	1096048	D
Trane	340039P01	A
	B138196P01	B
	B144676P01	A
	B144676P02	B
	B340039P01	A
	IGN23	A
	IGN26	B
Viessman	IGN30	B
	IGN34	A
	9302-094	A
Wayne Home Equip.	62821-001	A
	62821-002	
Weil McLain	511-330-139	B
	511-330-190	
White LB	511-330-193	A
	120-07549	
White-Rodgers	767A-301	A
	767A-303	F
	767A-306	A
	767A-311	
	767A-350	F
	767A-353	
	767A-354	A
	767A-357	F
	767A-361	A
	767A-364	
	767A-366	
	767A-370	B
	767A-371	A
	767A-372	A
	767A-373	D
	767A-376	B
	767A-377	A
767A-382	B	
Williamson	9050	A
York	025-27766-000	A
	025-27774-000	
	025-29043-000	
	025-29050-000	

^a Table data is correct to the best of Honeywell's knowledge as of this publication's date. However, some appliances may have igniter applications that are beyond the capabilities of this kit.

^b For igniters that require bracket A, use the template to determine the tab to be removed.

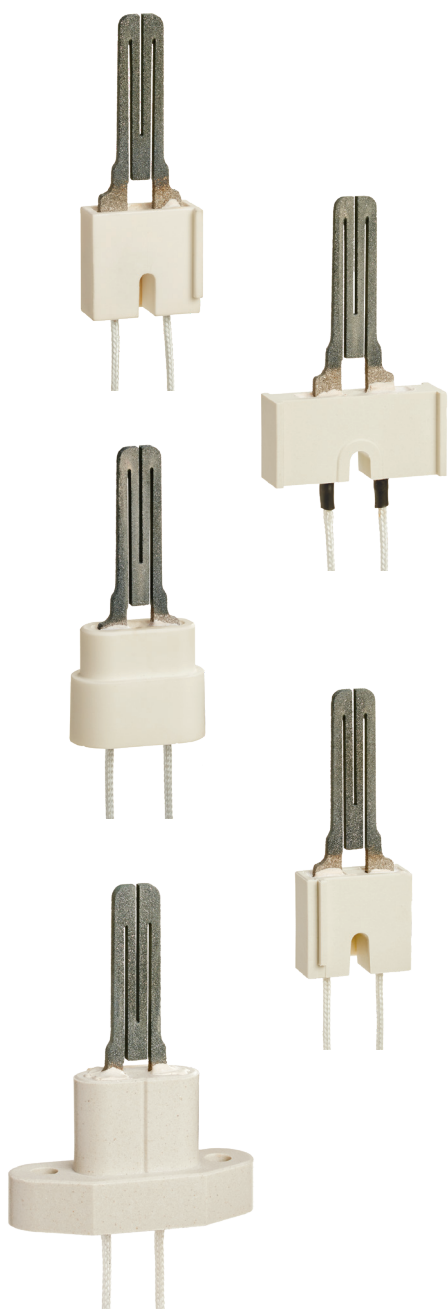
^c For Carrier sealed combustion furnaces, you must use bracket E and retain the existing orange gasket for use with bracket E.

For a complete cross-reference, visit www.customer.resideo.com

Silicon Carbide Igniters

Honeywell offers a full line of 120 V direct replacement silicon carbide igniters. Q4100 igniters work with most configurations of element shapes, brackets, connectors, and lead wire lengths. Honeywell igniters are made in the USA and backed by a 2-year warranty.

Silicon Carbide Igniters Cross Reference



MANUFACTURER	PART #	HONEYWELL PART #
Amana	601	Q4100C9048
	10041601	Q4100C9042
	10755002	Q4100C9046
	20165703	Q4100C9054
	10735003A	Q4100C9046
	138196P01	Q4100C9056
	201657-03	Q4100C9048
	20165703S	Q4100C9048
	B1336102	Q4100C9042
	B144676P01	Q4100C9058
	B144676P02	Q4100C9052
	B340039P01	Q4100C9054
	D99182	Q4100C9042
	D9918202A	Q4100C9042
American Appliance	271B	Q4100C9050
American Road Equipment	201W	Q4100C9046
American Standard	IGN0030	Q4100C9056
American Water Heater	6901800	Q4100C9050
	6903767	Q4100C9050
	6903768	Q4100C9050
	6905032	Q4100C9046
Arco Air	1096048	Q4100C9066
	1380680	Q4100C9066
	100-9980	Q4100C9046
Armstrong	38322B001	Q4100C9046
Barnett Brass	661923	Q4100C9042
	661925	Q4100C9050
	661926	Q4100C9052
	661927	Q4100C9056
	661928	Q4100C9060
	661929	Q4100C9054
Carrier/ Bryant/ Payne	LH33ZS001A	Q4100C9056
	LH33ZS002	Q4100C9056
	LH33ZS003	Q4100C9056
	LH33ZS004	Q4100C9056
Claire Brothers	C-238	Q4100C9046
	C-242	Q4100C9046
Coleman	1474-051	Q4100C9046
	1474-052	Q4100C9046
Comfort Maker	1096048	Q4100C9066
Comfort Zone	150114-04-01	Q4100C9050
Detroit Radiant	201D	Q4100C9068
DMO Industries	20834	Q4100C9046
Dornback	271W	Q4100C9046
Ducane	20015201	Q4100C9056
Eaton	F1-402	Q4100C9046
	F1-403	Q4100C9046
	F1-404	Q4100C9048
	F1-407	Q4100C9052
	FI-401	Q4100C9042
	FI-405	Q4100C9068
	FI-406	Q4100C9050

MANUFACTURER	PART #	HONEYWELL PART #
Eaton	FI-408	Q4100C9054
	FI-409	Q4100C9056
	FI-410	Q4100C9058
	FI-412	Q4100C9062
Enerco	10399	Q4100C9046
EZFLOW	62374	Q4100C9062
	6320770	Q4100C9046
Frigidaire	6320880	Q4100C9046
	6323540	Q4100C9046
	632-3540	Q4100C9046
	RH622286893	Q4100C9046
Gemline	IG-106	Q4100C9050
	IG-107	Q4100C9062
General Electric	WG37X11	Q4100C9056
	WG37X34	Q4100C9056
Glow Core	1950001	Q4100C9050
	FY 009	Q4100C9050
	HSRK7	Q4100C9050
Goodman	B11726-06	Q4100C9046
	B1401009	Q4100C9062
	B14010-15S	Q4100C9066
Grimsby Stove	ZCO-350	Q4100C9046
GSW	71082	Q4100C9062
	86483	Q4100C9062
HB Smith	9050	Q4100C9046
	50018	Q4100C9068
	101344	Q4100C9068
	11148245	Q4100C9068
Heatmaker	2400-048	Q4100C9042
	2400-286	Q4100C9042
	2400-359	Q4100C9042
	3079-100	Q4100C9042
	9330-102	Q4100C9042
Heil-Quaker	1001344	Q4100C9068
	1009604	Q4100C9062
	1009648	Q4100C9062
	1096048	Q4100C9066
	1148145	Q4100C9068
	10096047	Q4100C9062
Integra	3260618	Q4100C9046
Intercity	1009604	Q4100C9062
	1096048	Q4100C9066
Janitrol Goodman	0230K00001	Q4100C9048
	B1401009	Q4100C9062
	B1401015S	Q4100C9066
	B1401018	Q4100C9066
	B140109S	Q4100C9066
LB White	120-07549	Q4100C9046
Lennox	36N77	Q4100C9056
	36N7701	Q4100C9056
	96P01	Q4100C9042
	96P0101	Q4100C9042
	98P77	Q4100C9068
	98P78	Q4100C9054

MANUFACTURER	PART #	HONEYWELL PART #
Lochinvar	LCVT27021G	Q4100C9050
	PLT2702	Q4100C9050
Luxaire	25326250000	Q4100C9046
Maddox	201	Q4100C9056
Majestic	75-92-104	Q4100C9046
	75-92-105	Q4100C9046
Metzger	201N	Q4100C9046
	201W	Q4100C9046
Mor-Flo	3200580	Q4100C9050
	3200618	Q4100C9046
	3210401	Q4100C9050
Nordyne	105141000	Q4100C9046
	632-0770	Q4100C9046
	632-0880	Q4100C9046
	201	Q4100C9056
Norton/ St. Gobain	271	Q4100C9056
	201A	Q4100C9042
	201B	Q4100C9050
	201D	Q4100C9068
	201J	Q4100C9050
	201K	Q4100C9046
	201L	Q4100C9046
	201M	Q4100C9050
	201N	Q4100C9046
	201P	Q4100C9046
	201R	Q4100C9046
	201R	Q4100C9046
	201W	Q4100C9046
	201Y	Q4100C9050
	271A	Q4100C9042
	271M	Q4100C9048
	271M	Q4100C9050
	271M	Q4100C9056
	271N	Q4100C9046
	271NM	Q4100C9062
	271NM	Q4100C9066
	271P	Q4100C9068
	271Q	Q4100C9042
	271W	Q4100C9046
	271Y	Q4100C9050
	MB258909	Q4100C9042
	MB258910	Q4100C9056
	MB258911	Q4100C9046
	MB258912	Q4100C9048
	MB457025	Q4100C9054
	MB457025	Q4100C9066
	MB457026	Q4100C9068
	MB457027	Q4100C9050
	MB457038	Q4100C9052
	MB457551	Q4100C9058
	MB457555	Q4100C9056
	MB458902	Q4100C9062
	MB478264	Q4100C9046
	MB478265	Q4100C9048
	MB478266	Q4100C9054
MB478267	Q4100C9068	
MB478268	Q4100C9050	
MB478270	Q4100C9058	
MB478272	Q4100C9062	
MB478601	Q4100C9050	
Olsen	26789	Q4100C9046
Perfection Schwank	108803-G1	Q4100C9050
Raypak	50015	Q4100C9056
	600915	Q4100C9056
Raytheon	D9918202A	Q4100C9042
Rheem	904343000	Q4100C9056
	62-22441-01	Q4100C9046
	62-22441-01	Q4100C9054
	62-22668-93	Q4100C9054
	62-22668-02	Q4100C9046
	62-22668-82	Q4100C9060
	62-22668-82	Q4100C9060
	62-22668-93	Q4100C9046
	62-22668-93	Q4100C9046

MANUFACTURER	PART #	HONEYWELL PART #
Roberts Gordon	90436600	Q4100C9046
	904343000	Q4100C9056
Robertshaw	41-401	Q4100C9042
	41-401N	Q4100C9042
	41-402	Q4100C9046
	41-402N	Q4100C9046
	41-403	Q4100C9056
	41-403N	Q4100C9056
	41-404	Q4100C9048
	41-404N	Q4100C9048
	41-405	Q4100C9068
	41-405N	Q4100C9068
	41-406	Q4100C9050
	41-406N	Q4100C9050
	41-407	Q4100C9052
	41-407N	Q4100C9052
	41-408	Q4100C9054
	41-408N	Q4100C9054
	41-409	Q4100C9056
	41-409N	Q4100C9056
	41-410	Q4100C9058
	41-410N	Q4100C9058
	41-411	Q4100C9060
	41-411N	Q4100C9060
	41-412	Q4100C9062
	41-412N	Q4100C9062
41-414	Q4100C9066	
Ruud	62-22868-02	Q4100C9046
	62-22868-93	Q4100C9046
Snyder General	1380654	Q4100C9056
	1380672	Q4100C9056
	1380680	Q4100C9056
Starlite	11120-100-1401	Q4100C9042
	11120-100-1402	Q4100C9046
	11120-100-1403	Q4100C9056
	11120-100-1405	Q4100C9048
	11120-100-1406	Q4100C9050
	11120-100-1407	Q4100C9052
	11120-100-1408	Q4100C9054
	11120-100-1409	Q4100C9056
Supco	SIG-106	Q4100C9050
	SIG107	Q4100C9062
	SIG-108	Q4100C9060
	SIG-401	Q4100C9042
	SIG-402	Q4100C9046
	SIG-403	Q4100C9056
	SIG-405	Q4100C9068
	SIG-406	Q4100C9050
	SIG-407	Q4100C9052
	SIG-408	Q4100C9054
	SIG-409	Q4100C9056
	SIG-410	Q4100C9058
	SIG-412	Q4100C9062
	SIG-414	Q4100C9066
Superior Fireplace	94851	Q4100C9046
Temp Controls	9302-094	Q4100C9068
Tempstar	1096048	Q4100C9066
Trane	B138196P01	Q4100C9056
	B144676P01	Q4100C9058
	B144676P02	Q4100C9052
	B340039P01	Q4100C9054
	IGN00026	Q4100C9056
	IGN00030	Q4100C9052
	IGN00034	Q4100C9054
	IGN00054	Q4100C9050
	IGN-0034	Q4100C9054
	IGN21	Q4100C9046
	IGN23	Q4100C9046
	IGN23	Q4100C9056
	IGN26	Q4100C9056
IGN30	Q4100C9052	
IGN34	Q4100C9054	
ING00023	Q4100C9046	

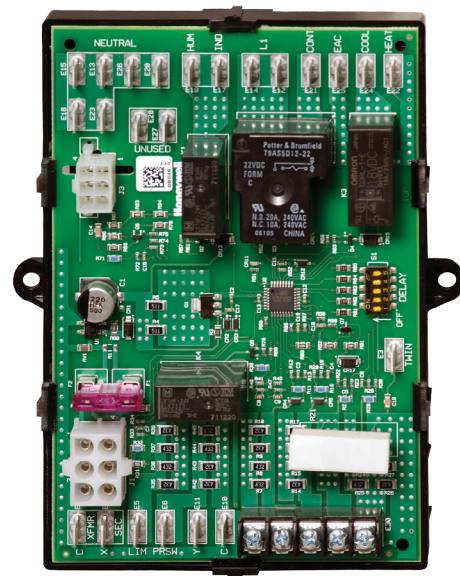
MANUFACTURER	PART #	HONEYWELL PART #
Uni-Line	10530	Q4100C9062
	63467	Q4100C9046
	63468	Q4100C9056
	63469	Q4100C9048
	63470	Q4100C9068
	63472	Q4100C9052
	63473	Q4100C9054
	63474	Q4100C9056
	63475	Q4100C9058
	63477	Q4100C9060
	64346	Q4100C9066
	66201310530	Q4100C9062
	41-238	Q4100C9046
	41-242	Q4100C9046
Viessman	9302-094	Q4100C9068
Wayne Home Equipment	62821-001	Q4100C9046
	62821-002	Q4100C9046
Weil McLain	79074	Q4100C9046
	511-330-139	Q4100C9056
	511-330-188	Q4100C9050
	511-330-190	Q4100C9048
Whirlpool	511-330-193	Q4100C9056
	99794322	Q4100C9042
	99794323	Q4100C9046
	99794326	Q4100C9050
	99794328	Q4100C9054
	999794327	Q4100C9052
White Rodgers	99796417	Q4100C9068
	99911563	Q4100C9070
	99911564	Q4100C9072
	5E809	Q4100C9044
	5E810	Q4100C9040
	5E811	Q4100C9068
	767-301	Q4100C9068
	767-A303	Q4100C9040
	767A-306	Q4100C9068
	767A-309	Q4100C9070
	767A-310	Q4100C9070
	767A-311	Q4100C9072
	767A-35	Q4100C9046
	767A-350	Q4100C9068
	767A-352	Q4100C9042
	767A353	Q4100C9040
	767A-354	Q4100C9068
	767A-356	Q4100C9042
	767A-356	Q4100C9044
	767A-357	Q4100C9040
	767A-361	Q4100C9068
	767A-364	Q4100C9072
	767A-365	Q4100C9070
	767A-366	Q4100C9072
767A-369	Q4100C9042	
767A-369	Q4100C9042	
767A-370	Q4100C9056	
767A-371	Q4100C9046	
767A-372	Q4100C9054	
767A-373	Q4100C9062	
767A-374	Q4100C9050	
767A-376	Q4100C9052	
767A-377	Q4100C9058	
767A-382	Q4100C9048	
767A-383	Q4100C9060	
767A-384	Q4100C9066	
Williamson	950	Q4100C9046
York	025-25435-000	Q4100C9070
	025-27766-000	Q4100C9068
	025-27774-000	Q4100C9068
	025-29043-000	Q4100C9046
	025-29050-000	Q4100C9068
	025-32625-000	Q4100C9046

Universal Electronic Fan Timer

Replaces all others. The new universal platform that will not only integrate control of all combustion blower and circulating fan operations in a gas warm air appliance but also replace most ST9120, ST9141 and ST9160 fan timer boards. Save room on your truck or on your shelves with a supply of ST9120U1011 timers and know you're covered.

When selecting fan timers for your next job, look for these Honeywell features:

- Universal application
- Easy installation
- Quality construction for long service life



ST9120U1011

- Replaces 44 existing Honeywell controls to reduce inventory
- Integrates control of all combustion blower and circulating fan operations in a gas warm-air appliance
- Replaceable fuse
- DIP switch selectable heat and cool delay on and off times
- Diagnostic LED
- EAC and HUM convenience terminal connections and continuous low speed indoor air circulation are provided

ST9120U REPLACES OVER 44 EXISTING MODELS

ST9101A1006	ST9120C3018	ST9120G4038	ST9160B1001
ST9101A1014	ST9120C4008	ST9120U1003	ST9160B1019
ST9101A1022	ST9120C4016	ST9141A1002	ST9160B1027
ST9120A2004	ST9120C4040	ST9141A1028	ST9160B1035
ST9120B1005	ST9120C4057	ST9141B1001	ST9160B1043
ST9120C1012	ST9120C5005	ST9150A1003	ST9160B1050
ST9120C1020	ST9120C5013	ST9150B2000	ST9160B1068
ST9120C2002	ST9120D3009	ST9150B2018	ST9160B1076
ST9120C2010	ST9120G2024	ST9150B2026	ST9160B1084
ST9120C2028	ST9120G2032	ST9150B2034	ST9160C1000
ST9120C3000	ST9120G4004	ST9160A1002	ST9160C1018

Universal Electronic Fan Timer OEM Replacement Guide

RECOMMENDED DIP SWITCH SETTING						
Replaced Control Model Number	Original OEM Appliance	1	2	3	4	5
ST9101A1006	Rheem	off	off	off	off	off
ST9101A1014	Rheem	off	off	off	off	off
ST9101A1022	Trade	off	off	off	off	off
ST9120A1006	Armstrong	off	off	off	off	off
ST9120A2004	Armstrong	on	off	on	off	off
ST9120B1005	Ducane	off	on	off	off	off
ST9120C1012	Snyder General	on	off	off	off	off
ST9120C1020	Nordyne	on	off	off	off	off
ST9120C2002	York	off	off	off	off	off
ST9120C2010	Ducane	off	off	off	off	off
ST9120C2028	Armstrong	off	off	off	off	on
ST9120C3000	ICP	off	off	on	on	off
ST9120C3018	Bard	on	off	off	off	on
ST9120C4008	ICP	off	off	on	on	off
ST9120C4016	ICP	off	off	on	on	off
ST9120C4040	ICP	off	off	on	on	off
ST9120C4057	ICP	off	off	on	on	off
ST9120C5005	ICP	off	off	on	off	off
ST9120C5013	ICP	off	off	on	off	off
ST9120D3009	Goodman	off	off	on	off	on
ST9120G2008	ICP	on	off	off	on	off
ST9120G2016	ICP	off	off	off	on	off
ST9120G2024	Skymark	off	on	off	on	off
ST9120G2032	Skymark	off	on	off	off	on
ST9120G4004	ICP	off	off	on	on	off
ST9120G4012	ICP	off	off	on	on	off
ST9120G4038	Trade	off	off	on	on	off
ST9120U1003	Trade	off	off	on	off	off
ST9141A1002	Consolidated Industries	off	off	on	off	on
ST9160B1035		off	off	off	off	off
ST9160B1068	Armstrong	on	off	off	off	on
ST9160B1076	Ducane	off	off	off	off	off
ST9160B1084	ICP	off	off	on	off	on
ST9120U Factory Default Setting		off	off	off	off	off

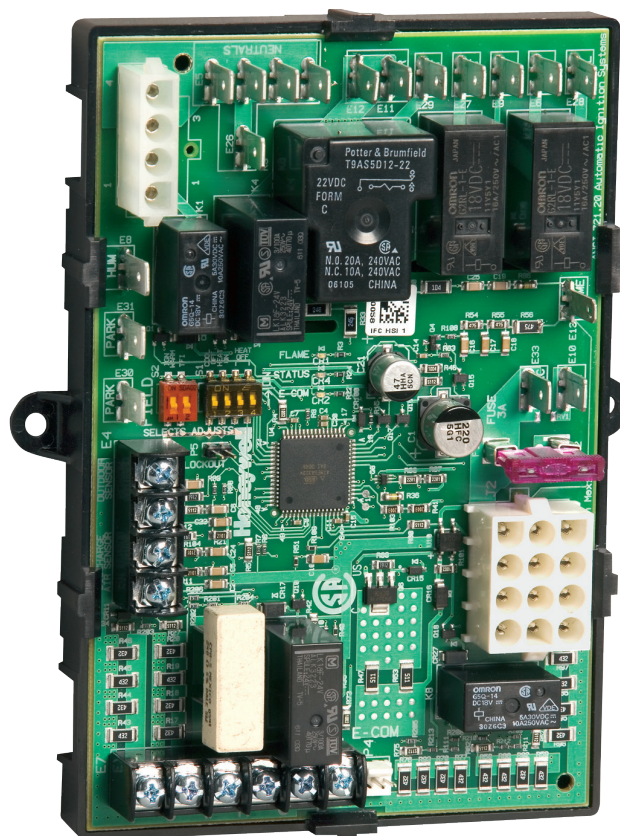
For a complete cross-reference, visit www.customer.resideo.com

Universal Integrated Furnace Control

The Honeywell Hot Surface Ignition Universal Integrated Furnace Control offers universal compatibility and remote monitoring and diagnostics. Able to replace a large number of furnace controls in single-stage heating and cooling appliances. Honeywell UIFCs are the only controls you need for residential natural or liquid propane fueled furnaces.

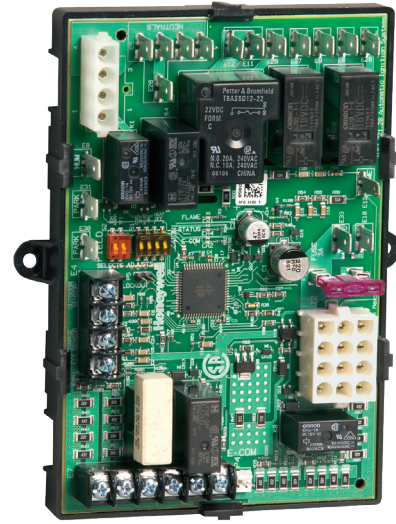
When selecting furnace controls for your next job, look for these Honeywell features:

- Replaces over 195 furnace controls
- Complete set of wiring harnesses for universal compatibility, simplified installation and field-adjustable timings
- LED indicators provide system status, performance and diagnostic information
- EnviraCOM™ communications enabled



HSI Universal Integrated Furnace Control

- Complete set of wiring harnesses for universal compatibility and simplified installation allowing for direct replacement of competitive boards. Now available with new 12 x 12 pin main harness
- LED indicators provide system status, performance and diagnostic information
- EnviraCOM™-enabled for easy setup of local or remote monitoring and diagnostic systems
- Engineered for reliability and long-term performance



S9200U1000 REPLACES THESE INTEGRATED FURNACE CONTROLS

Amana/Goodman	10207704, 10207706, 10207714, 10207719, 102077-02, 102077-03, 102077-04, 102077-09, 102077-19, 1809913, 10207701, 10207702, 10207703, 10207710, B1809913, B18099-13, PCBBF136, PCBBF140
ICM	ICM280
ICP	1010806, 1380686, 1380698, 1380699, 1380-686, 1380-699
Lennox	X445901, 1214201
Nordyne	624591, 624557, 624564, 624628, 902378, 902696, 903106, 6245570, 6245640, 6246310, 624557-0, 624591A, 624591-A, 624591-B, 624591-C, 624591-D, 624628-0, 624631-0, 624631A, 624631-A, 624631-B, 710128A, CAR903106
Other Manufacturers	350486, 8068142, 8068561, 8068563, 10334901, 99958174, 99958175, X1312066010
Rheem/Robertshaw	62-24268-01, 62-24268-02, 62-24268-03, 695-200
Texas Instruments	41F-5, 61F3, 6DT-1, 6DT-2
Trane	CNT03740, CNT1309, CNT1616, CNT1848, CNT1849, CNT2181, CNT2182, CNT2183, CNT2789, D340790P01, D341122P01, D330927P01, D330930P01, D330934P01, D340035P01, D340354P01, D340774P01, D341235P01
United Technologies	1012-83-9336AHSC1, 1012-83-9337A, 1012-83-9651B, 1012-925A, 1012-925B, 1012-925C, 1012933D, 1012-933D, 1012955A, 1012-955A
White-Rodgers	50A50-130, 50A50-131, 50A50-208, 50A50-210, 50A50-215, 50A50-216, 50A50-229, 50A50-240, 50A50-245, 50A50-298, 50A50-407, 50A50-472, 50A50-475, 50A55-245, 50A55-250, 50A55-288-05, 50A50-110, 50A50-111, 50A50-112, 50A50-113, 50A50-142, 50A50-143, 50A50-205, 50A50-206, 50A50-207, 50A50-209, 50A50-230, 50A50-241, 50A50-285, 50A50-286, 50A50-288, 50A50-295, 50A50-296, 50A50-405, 50A50-406, 50A50-408, 50A50-438, 50A50-471, 50A50-473, 50A50-474, 50A50-571, 50A55-120, 50A55-143, 50A55-241, 50A55-285, 50A55-286, 50A55-288, 50A55-438, 50A55-474, 50A55-571, 50A55-843, 50T35730, 50T35-730, 50T35743, 50T35-743
York	3101250000, 5253733900, 43101972100, 52537074000, 52537077000, 031.01234.000, 031-00662000, 031-01250-700, 031-01266-700, 031-01267-00, 331-09167-000, 431-01972-100, 31011140002, 031-00662, 031-00662, 031-00662-000, 031-00662-700, 031-01140-000, 031-01140-001, 031-01140-002, 031-01140-701, 031-01140-702, 031-01234-700, 031-01235-000, 031-01235-700, 031-01250-000, 031-01266-000, 031-01267-000, 031-01267-001, 031-01267-001A, 031-01284-000, 031-01933-000, 031-01972-000, 031-01973-000, 031-02166-000, 031-09166-000, 031-09167-000, 331-01933-000, 331-01972-200, CAR03101973000, CAR33101972200, CAR50A55843, G951ADB1401, G951ADB1401C, G951ADB-1401C, G951ADB1402, G951ADB-1402, G951AEB-1403, P03101267001, P031-01267-001, PTH031011400-00

For a complete cross-reference, visit www.customer.resideo.com

Universal Integrated Furnace Control Selection Guide

	SKU	HARNESS	FIELD SETTINGS RECOMMENDATION				SAFETY TIME SETTINGS																																													
			SW1	SW2	SW3	SW4	SW1	SW2																																												
Amana/Goodman ¹	1809913, B1809913, B18099-13	Main Connector - E Inducer & HSI Connector - F	ON	OFF	60/90/120/180	60/90/120/180	OFF	ON																																												
	10207701	Inducer & HSI Connector - G			ON	OFF			OFF	OFF																																										
	10207702				60/90/120/180	60/90/120/180					OFF	OFF																																								
	10207703							60/90/120/180					60/90/120/180	OFF	OFF																																					
	10207704															60/90/120/180	60/90/120/180	OFF	OFF																																	
	10207706																			60/90/120/180	60/90/120/180	OFF	OFF																													
	10207710																							60/90/120/180	60/90/120/180	OFF	OFF																									
	10207714																											60/90/120/180	60/90/120/180	OFF	OFF																					
	10207719																															60/90/120/180	60/90/120/180	OFF	OFF																	
	102077-02																																			60/90/120/180	60/90/120/180	OFF	OFF													
	102077-03																																							60/90/120/180	60/90/120/180	OFF	OFF									
	102077-04																																											60/90/120/180	60/90/120/180	OFF	OFF					
	102077-09																																															60/90/120/180	60/90/120/180	OFF	OFF	
102077-19	60/90/120/180		60/90/120/180	OFF			OFF																																													
ICM		ICM280							Main Harness E & Inducer/HSI Harness F	Check Control Field Settings																																										Check Control Safety Timings
ICP		1010806			Inducer/HSI Harness A	ON			OFF	60/90/120/180		OFF																																								OFF
		1380686						ON																																												
		1380698						OFF																																												
		1380699						OFF																																												
		1380-686						ON																																												
		1380-699						ON																																												
Lennox		1214201			Inducer/HSI Harness A	ON		OFF	ON	OFF	OFF	OFF																																								
		X445901							60/90/120/180	60/90/120/180																																										
Nordyne		624557			Main Harness D & Inducer/HSI Harness B	ON		OFF	60/90/120/180	60/90/120/180	ON	OFF																																								
		624564																																																		
		624591																																																		
	624628																																																			
	902378																																																			
	902696																																																			
	903106																																																			
	6245570																																																			
	6245640																																																			
	6246310																																																			
	624557-0																																																			
	624591A																																																			
	624591-A																																																			
	624591-B																																																			
	624591-C																																																			
	624591-D																																																			
	624628-0																																																			
	624631-0																																																			
	624631A																																																			
	624631-A																																																			
	624631-B																																																			
710128A																																																				
CAR903106																																																				

¹ Wiring harness G should be used if the control being replaced has a 2-pin inducer/igniter connector instead of a 4-pin inducer/igniter connector.

Use only with 120 VAC Controls.

	SKU	HARNESS	FIELD SETTINGS RECOMMENDATION				SAFETY TIME SETTINGS													
			SW1	SW2	SW3	SW4	SW1	SW2												
Other Manufacturers	350486	Inducer & HSI Connector - A	ON	OFF	60/90/120/180	60/90/120/180	OFF	OFF												
	8068142																			
	8068561																			
	8068563																			
	10334901																			
	99958174																			
	99958175																			
X13120666010																				
Rheem/Robert Shaw	62-24268-01	Main Connector - D Inducer & HSI Connector - C	ON	OFF	60/90/120/180	60/90/120/180	ON	ON												
	62-24268-02																			
	62-24268-03																			
	695-200																			
Texas Instruments	41F-5	Main Connector - E Inducer & HSI Connector - F	ON	OFF	60/90/120/180	60/90/120/180	OFF	ON												
	50T35730																			
	50T35-730																			
	50T35743																			
	50T35-743																			
	61F3																			
	6DT-1																			
6DT-2																				
Trane	CNT03740	Inducer & HSI Connector - A Add jumper on harness connector (Roll-out switch)	ON	OFF	60/90/120/180	60/90/120/180	OFF	OFF												
	CNT1309	Inducer & HIS Connector - G	Check Settings	ON				60/90/120/180	60/90/120/180	OFF	ON									
	CNT1616																			
	CNT1848																			
	CNT1849																			
	CNT2181																			
	CNT2182																			
	CNT2183																			
	CNT2789																			
	D330927P01	Inducer & HSI Connector - A Add jumper on harness connector (Roll-out switch)	ON	OFF							60/90/120/180	60/90/120/180	OFF	OFF						
	D330930P01																			
	D330934P01																			
	D340035P01																			
	D340354P01																			
	D340774P01																			
D340790P01																				
D341122P01																				
D341235P01																				
D341235P01																				
D341235P01																				
United Technologies	1012-83-9336AHSC1	Main Connector - E Inducer & HSI Connector - F	ON	OFF	60/90/120/180	60/90/120/180	OFF	ON												
	1012-83-9337A																			
	1012-83-9651B																			
	1012-925A	Inducer & HSI Connector - A							ON	OFF				60/90/120/180	60/90/120/180	OFF	ON			
	1012-925B																			
	1012-925C	Main Connector - D Inducer & HSI Connector - C									ON	OFF	60/90/120/180					60/90/120/180	OFF	ON
	1012933D																			
	1012-933D																			
	1012955A	Main Connector - E Inducer & HSI Connector - F																		
1012-955A																				

For a complete cross-reference, visit www.customer.resideo.com

Universal Integrated Furnace Control Selection Guide

	SKU	HARNESS	FIELD SETTINGS RECOMMENDATION				SAFETY TIME SETTINGS				
			SW1	SW2	SW3	SW4	SW1	SW2			
White-Rodgers	50A50-110	Inducer & HSI Connector - A	ON	OFF	60/90/120/180	60/90/120/180	OFF	ON			
	50A50-111							OFF			
	50A50-112							OFF			
	50A50-113							OFF			
	50A50-130							OFF			
	50A50-131							OFF			
	50A50-142							OFF			
	50A50-143							OFF			
	50A50-205							OFF			
	50A50-206							OFF			
	50A50-207	Inducer & HSI Connector - G	OFF	OFF	60/90/120/180	60/90/120/180	OFF	ON			
	50A50-208	OFF									
	50A50-209	OFF									
	50A50-210	OFF									
	50A50-215	OFF									
	50A50-216	OFF									
	50A50-229	OFF									
	50A50-230	OFF									
	50A50-240	OFF									
	50A50-241	OFF									
	50A50-245	Inducer & HSI Connector - G	ON	ON	60/90/120/180	60/90/120/180	OFF	OFF			
	50A50-285	OFF									
	50A50-286	Inducer & HSI Connector - A						ON			
	50A50-288	Inducer & HSI Connector - G						ON			
	50A50-295	Inducer & HSI Connector - G						ON			
	50A50-296	Inducer & HSI Connector - G						ON			
	50A50-298	Inducer & HSI Connector - A						ON			
	50A50-405	Inducer & HSI Connector - A Add jumper on harness connector (Roll-out switch)						OFF			
	50A50-406	Inducer & HSI Connector - A						ON			
	50A50-407	Inducer & HSI Connector - A						ON			
	50A50-408	Inducer & HSI Connector - A	ON								
	50A50-438	Inducer & HSI Connector - A	Check Settings	ON	60/90/120/180	60/90/120/180	OFF	ON			
	50A50-471	Inducer & HSI Connector - A Add jumper on harness connector (Roll-out switch)	OFF	OFF							
	50A50-472	Inducer & HSI Connector - A	Check Settings	ON							
	50A50-473	Inducer & HSI Connector - A Add jumper on harness connector (Roll-out switch)	OFF	OFF							
	50A50-474	Inducer & HSI Connector - A Add jumper on harness connector (Roll-out switch)	OFF	OFF							
	50A50-475	Inducer & HSI Connector - A	ON	OFF							
	50A50-571	Inducer & HSI Connector - A Add jumper on harness connector (Roll-out switch)	ON	OFF							
	50A55-120	Inducer & HSI Connector - A	OFF	30/60				ON	OFF	ON	
	50A55-143	Inducer & HSI Connector - A	ON	OFF				60/90/120/180	60/90/120/180	OFF	ON
	50A55-241	ON									
	50A55-245	ON									
	50A55-250	ON									
50A55-285	ON										
50A55-286	ON										
50A55-288	ON										
50A55-288-05	Inducer & HSI Connector - G	ON									
50A55-438	Inducer & HSI Connector - A	Check Settings			ON	ON	OFF				OFF
50A55-474	Inducer & HSI Connector - A Add jumper on harness connector (Roll-out switch)	OFF			ON	OFF	OFF				OFF
50A55-571	Inducer & HSI Connector - A	ON	ON	OFF	OFF	OFF					
50A55-843 - universal	Inducer & HSI Connector - A	Check Settings	Check Settings	60/90/120/180	60/90/120/180	OFF	OFF				

Use only with 120 VAC Controls.

	SKU	HARNESS	FIELD SETTINGS RECOMMENDATION				SAFETY TIME SETTINGS	
			SW1	SW2	SW3	SW4	SW1	SW2
York	3101250000	Inducer & HSI Connector - A	ON	OFF	60/90/120/180	60/90/120/180	OFF	OFF
	5253733900							ON
	31011140002							OFF
	43101972100							ON
	52537074000							OFF
	52537077000							ON
	031.01234.000							OFF
	031-00662							ON
	031-00662							
	031-00662000							
	031-00662-000							
	031-00662-700							
	031-01140-000							
	031-01140-001							
	031-01140-002							
	031-01140-701							
	031-01140-702							
	031-01234-700							
	031-01235-000							
	031-01235-700							
	031-01250-000							
	031-01250-700							
	031-01266-000							
	031-01266-700							
	031-01267-00							
	031-01267-000							ON
	031-01267-001							OFF
	031-01267-001A							ON
	031-01284-000							
	031-01933-000							
	031-01972-000							
	031-01973-000							
	031-02166-000							
	031-09166-000							
	031-09167-000							
	331-01933-000							
	331-01972-200							
	331-09167-000							
	431-01972-100							
	CAR03101973000							
	CAR33101972200							
	CAR50A55843							
G951ADB1401								
G951ADB1401C								
G951ADB-1401C								
G951ADB1402								
G951ADB-1402								
G951AEB-1403								
P03101267001								
P031-01267-001								
PTH031011400-00								

For a complete cross-reference, visit www.customer.resideo.com

Fan and Limit Controls

Honeywell fan and limits combines high temperature limit with circulating blower control. As an industry standard for many years, these controls have a large and varied installed base. You'll find Honeywell fan and limits on a wide range of furnace equipment. Our universal family increases service efficiency and reduces truck and warehouse inventory.

Key features for the family of universal fan and limits:

- Family members cover the full range of insertion — 5", 8", 11-1/2"
- Adjustment tool and cross-reference allow for field adjustment to factory settings
- Universal kit accessories reduce inventory

L4064

High Limit and Fan Controller

- Used in all types of forced-air heating systems
- Three wiring terminal options available for easy installation
- Available in a variety of fan and high-limit setting ranges
- Controls adapt to many competitive mounting holes in replacement applications
- Push-in receptacles for stripped wire
- L4064 models for timed fan on
- Special high temperature limit models available
- Suitable for line voltage, low voltage or millivoltage control applications



Fan and Limits Selection Guide

MODEL	OS#	REGION	ELEMENT INSERTION LENGTH (IN.)	REPLACES	HIGH LIMIT STOP	FAN-ON STOP	FAN-OFF STOP	MANUAL FAN BUTTON	MANUAL RESET	SWITCHING ACTION
L4064	L4064B2228	US/ Canada	5	L4064A1339, L4064A1503 L4064A1586, L4064A2402 L4064A2659, L4064A2980 L4064B1469, L4064B1683 L4064B2228, L4064B2640 L4064B2657, L4064B2681 L4064B2889, L4064B2897 L4064B2947, L4064B3010 L4064B3143, L4064B3143 L4064B3374, L4064B3432 L4064B3440, L4064B3473 L4064B3598, L4064E1983 L4064E2437, L4064E2544 L4064L1046	200°F 97°C	125°F 52°C	100°F 38°C	Yes	No	Fan: SPST — N.O. (make on rise), Limit: SPST — N.C. (break on rise)
	L4064R1159	US/ Canada	5	L4064E1835, L4064E2551 L4064L1145, L4064R1043 L4064R1050, L4064R1159	250°F 121°C	125°F 52°C	100°F 38°C	Yes	No	Fan: SPST — N.O. (make on rise), Limit: SPST — N.C. (break on rise)
	L4064B2236	US/ Canada	8	L4064A1347, L4064A1511 L4064A1719, L4064A1735 L4064A2030, L4064A2279 L4064A2998, L4064B1618 L4064B2236, L4064B2608 L4064B2772, L4064B2822 L4064B2905, L4064B2905 L4064B2962, L4064B3051 L4064B3085, L4064B3325 L4064B3333, L4064B3341 L4064B3366, L4064B3457 L4064B3499, L4064B3572 L4064E1777, L4064E2163 L4064E2171, L4064E2452 L4064E2502, L4064E2684 L4064F1023, L4064F1031 L4064F1080, L4064F1098 L4064L1004, L4064A2774	200°F 97°C	125°F 52°C	100°F 38°C	Yes	No	Fan: SPST — N.O. (make on rise), Limit: SPST — N.C. (break on rise)
	L4064R1142	US/ Canada	8	L4064A2469, L4064B1691 L4064B2616, L4064B2806 L4064B2814, L4064B2830 L4064B3390, L4064B3481 L4064B3507, L4064R1019, L4064R1118, L4064R1126, L4064R1142	250°F 121°C	125°F 52°C	100°F 38°C	Yes	No	Fan: SPST — N.O. (make on rise), Limit: SPST — N.C. (break on rise)
	L4064B2210	US/ Canada	11.5	L4064A1321, L4064A1453 L4064A2758, L4064A3012 L4064A3020, L4064A3038 L4064A3046, L4064B1451 L4064B1592, L4064B1717 L4064B1725, L4064B1931 L4064B2210, L4064B2723 L4064B2749, L4064B2848 L4064B2954, L4064B3036 L4064B3044, L4064B3077 L4064B3184, L4064B3465 L4064B3580, L4064E2056 L4064E2114, L4064E2130 L4064E2155	200°F 97°C	125°F 52°C	100°F 38°C	Yes	No	Fan: SPST — N.O. (make on rise), Limit: SPST — N.C. (break on rise)
	L4064R1134	US/ Canada	11.5	L4064A2972, L4064B2756 L4064J1008, L4064K1006 L4064L1129, L4064N1074 L4064R1027, L4064R1035 L4064R1068, L4064R1134 L4064R1167	250°F 121°C	125°F 52°C	100°F 38°C	Yes	No	Fan: SPST — N.O. (make on rise), Limit: SPST — N.C. (break on rise)

* Fan On and Fan Off may need to be adjusted.

Oil Primaries

Honeywell has set the standard for oil-fired furnaces, boilers and water heaters when it comes to oil primary controls. In addition to delivering dependability and high quality products, Honeywell has gone one step further to create an easy-to-use oil primary control designed to simplify installation and enhance maintenance. Our latest innovation will redefine that standard as the next generation of controls proves, it takes a legend to make one.

When selecting an oil primary for your next job, look for these Honeywell features:

- Universal application with field adjustable timings
- Integrated display allows for setup without using an external tool
- Advanced diagnostics that direct the technician to the likely cause of ignition failure
- Legendary performance and reliability



R7284U1004

Universal Digital Electronic Oil Primary

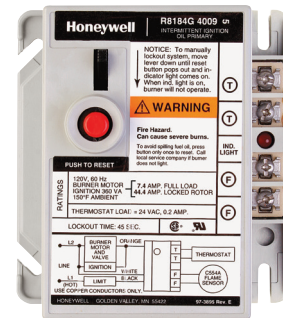
- A single part number for nearly all applications helps reduce inventory cost
- 16 character two line tri-lingual display provides simple programming and diagnostics
- No additional tool to purchase to take advantage of all control features
- Monitors igniter and cad cell and alerts technician what component caused ignition failure
- Error history and baseline readings provide system performance trends
- 5-year warranty.



R8184

Protectorelay® Oil Burner Control

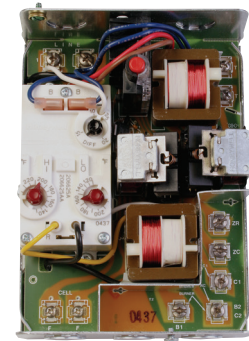
- Industry-standard intermittent ignition control
- Solid-state, flame-sensing circuit
- 45-second timing, safety switch
- Mounts on standard 4" x 4" junction box
- External button to manually reset safety switch after lockout
- 2-year warranty.



R8182

Combination Protectorelay® and Hydronic Heating Controllers

- Immersion-type Aquastat® controller and oil burner primary control
- Provides high limit and low limit/circulator control
- Use in intermittent ignition applications
- Circulator zone control with ZC and ZR terminals on R8182D, E, H, J
- 2-year warranty.



W8735S3000

EnviraCOM™ Alarm Module

- Works with any alarm generating EnviraCOM enabled control
- Local LED alarm present and communication active indication
- Simple low-voltage, 5-wire installation



Oil Primaries Selection Guide

OIL PRIMARIES						
		Specifications				
Ignition Type	Universal Service Part	Lockout Time (sec.)	Valve On Delay (sec.)	Blower Off Delay (min.)	Alarm Contacts	Manual Trip Lever w/ LED Indicator
Interrupted	R7284U1004	15	0/15	0/2/4/6	Yes*	Yes
			15			
		30	15	0.25		
			0/15	0/2/4/6		No
		45	0/15	0/2/4/6	Yes*	No
Intermittent	R7284U1004	15			Yes*	
		30				
		45				Yes
					Yes*	
	R8184M1051	45				

(1) Includes 40 VA transformers and heat/cool thermostat connections for warm-air furnace applications.

*Alarm accessory module required. EnviraCOM™ Alarm Module W8735S3000

R8182 COMBINATION AQUASTAT AND OIL PRIMARY				
Direct Service Part	Features and Functions			Upgraded Cross-Reference
	Mounting	Differential Temperature (°F)		Honeywell
High Limit		Low Limit/ Circulator		
R8182D1079	Vertical	10 fixed	10 to 25	R8182E1118
R8182D1111	Horizontal	10 fixed	10 to 25	R8182D1129
R8182H1070	J Box	10 fixed	10 to 25	

Cross-Reference					
Ignition Type	Universal Service Part	Honeywell	Beckett	Carlin	White-Rodgers
Interrupted	R7284U1004	R7184U1004, R7184P1031, R7184P1049, R7184P1056, R7184P1064, R7184P1072	7505P125M	50200-02S, 602000-02S, 6020002S015120, 6020002S030015, 6020002S030030, 6020002S030120, 6020002S030300, 6020002S030010	
		R7184A1026, R7184A1075, R7184A1000	7505A0000	40200-02S	669-640,669-670
		R7184B1024, R7184B1032, R7184B1016	7505B1500		
		R7184P1080, R7184P1098	7505P1515		
		R7184U1012			
		R7184A1018, R7184A1034		42230-02S	669-440, 669-445, 669-470, 669-540
		R7184U1020			
R7184A1042					
Intermittent	R7284U1004	R8184G1294, R8184G1302, R8184G4066, R8184G4074, R8184G4033, R8184G4090, R8184G1427, R8184G4058	7505A0000		668-601, 668-670
		R8184G1393, R8184G1302, R8184G4074, R8184G4033			668-501
		R8184G1286, R8184G1427, R8184G1458, R8184G4009, R8184G4025, R8184G4082, R8184G4108		48245-S	668-401, 668-415, 668-430, 668-515
					668-430
	R8184M1051	R8184M1002			668-441, 668-451, 668-454

CAD CELL SELECTOR GUIDE

Product Number	CAD Cells (1)	Lead Length (in.)	Wire Termination	Mounting Bracket	Includes	Tradeline Value	Replaces	White-Rodgers	Westwood
C554A1463	130367	60	2 Flag 1/4" QC	Type R	A, B, E, J and P Mounting Brackets and Fuel Line Adaptor	Super Tradeline	C554A1307, C554A1315, C554A1398, C554A1133, C554A1174, C554A1372, C554C1570, C554A1216, C554A1927, C554A1794	956-154	TMK-60
C554A1794	130367	60	Stripped	Type R	E Mounting Bracket and Fuel Line Adaptor	Tradeline	C554A1307, C554A1927	956-11 956-154	TMK-60

Notes:

*120320 replacement CAD cell 7.5 MA minimum sensitivity at 2' candles.
 *130367 high-sensitivity CAD cell 12 MA minimum sensitivity at 2' candles.

For a complete cross-reference, visit www.customer.resideo.com

Outdoor Reset

The AquaReset improves comfort and efficiency inside because it knows the weather outside. Our new product is designed to help homeowners save on energy costs by operating their boiler at more efficient settings based on the actual outdoor temperature while providing the necessary heat to maintain a comfortable indoor temperature.



W8735Y1000

Honeywell AquaReset Wireless Outdoor Reset Kit

- Upsell opportunity for contractors during a new boiler installation when an Outdoor Reset Ready Aquastat (L7224/L7248) is present
- Improves boiler efficiency by resetting the boiler water temperature based on the outdoor temperature
- Quick and easy install
- Compatible with any L7224/L7248 Outdoor Reset Ready Aquastat, S9361A Integrated Boiler Control, and R7910 SOLA Controls
- Kit includes Wireless AquaReset module (W8735ER1000) and wireless sensor (C7089R1013)



W8735S1000

Honeywell AquaReset Outdoor Reset Kit

- Designed to improve boiler efficiency by automatically resetting boiler water temperature based on outdoor temperature
- Upsell opportunity for contractors during a new boiler installation when an Outdoor Reset Ready Aquastat is present
- Simple installation with three wire connection to the Aquastat
- Compatible with any L7224/L7248 Outdoor Reset Ready Aquastat, S9361A Integrated Boiler Control, and R7910 SOLA Controls



W8735S1008

Honeywell AquaReset Domestic Hot Water Kit

Required for domestic hot water override with some Honeywell AquaReset installations*

- Compatible with Honeywell AquaReset wired and wireless kits
- Ensures domestic hot water needs are met when combining AquaReset with an indirect DHW tank.
- Easy three-wire installation to AquaReset module

* Kit required to enable domestic hot water override functionality with Indirect DHW tank when the Zr terminal on the Aquastat® is not used or available for DHW demand. See instructions or visit customer.resideo.com for complete details.

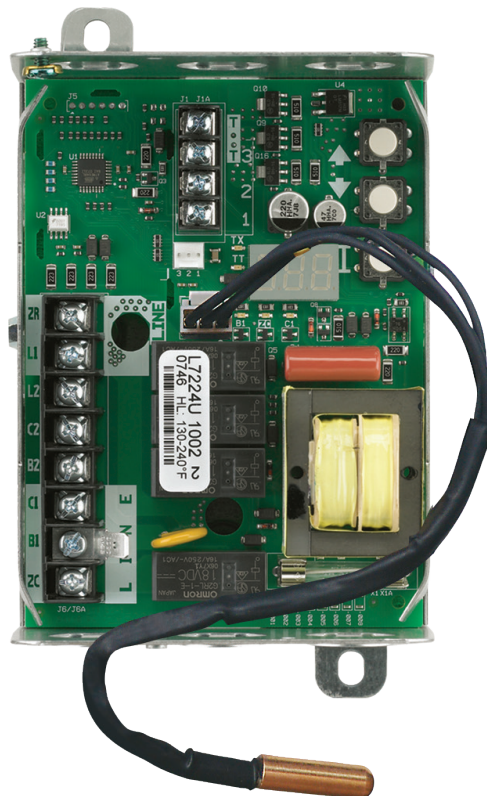


Aquastats®

The boiler industry standard, Honeywell Aquastats have a proven track record, wide OEM new equipment usage and a large installed base. Our electronic Aquastat family builds on this reputation while adding performance-enhancing features. Honeywell service parts have you covered, offering universal compatibility and improved service call efficiency — while keeping both distributor and contractor satisfaction in mind.

When selecting an Aquastat for your next job, look for these Honeywell features:

- Broad range and flexibility covers a variety of applications and needs
- Universal versions allow multiple mounting and configuration capability
- Universal versions reduce inventory and assure truck availability
- Electronic versions include communications as a standard feature, allowing add-on efficiency, troubleshooting and monitoring capability
- EnviraCOM™ communications enabled



L7224

Universal Oil Electronic Aquastat

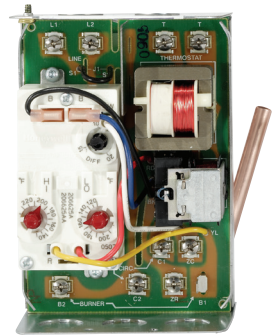
- Diagnostic updates through easy-to-read LED displays
- +/- 2° F accuracy
- Adjustable high- and low-limit differential
- Outdoor reset functionality available with W8735S1000 and W8735Y1000
- Provides multizone control
- Thermowell horizontal or vertical and flush mounting
- EnviraCOM™ communications enabled
- Compatible with W8735S3000 Alarm Module



L8124/L8148

Triple Aquastat Relay

- Oil and gas versions
- High-limit or high-and-low-limit versions
- Mounts directly on boiler horizontally or vertically
- Provides multizone control
- Immersion-type controllers that combine high limit protection with low limit and circulator control in forced hydronic heating systems
- The L8148 includes a transformer to provide power for the low-voltage control circuit
- Gas versions include a transformer to provide power for the low voltage circuit



L6006/L4006

Aquastat Controller

- Totally enclosed Micro Switch snap-acting switches operate on temperature rise to setpoint
- Visible control point scale and external adjustment screw permit easy setting
- Horizontal or vertical insertion of sensing element
- Direct or well immersion of the sensing element
- SPST and SPDT switching action



L6008/L4008

Aquastat Controller

- Visible control point scale and external adjustment screw permit easy setting
- Horizontal or vertical mounting of the remote element into boiler, tank or other container
- Fast-responding remote temperature sensor
- SPDT or SPST switching action



Single-Function Aquastat® Selection Guide

		SENSOR AND THERMOWELL			FEATURES AND FUNCTIONS					
Product Number ¹	Switch Configuration	Thermowell Included	Thermowell Spud Size — 14 NPT (in.)	Capillary Length (in.) ²	Manual Reset	Operating Temperature Range (°F)	Factory Stop (°F)	Differential Temperature (°F)	Electrical Ratings ⁴	
L4006A1009	SPST - N.C. (break on rise)	Yes	1/2	1-1/2		100 to 240		5 Fixed	A	
L4006A1017		Yes	1/2	1-1/2		100 to 240		5 to 30	A	
L4006A1132		Yes	3/4	3		100 to 240	160	5 Fixed	A	
L4006A1678					3		100 to 240		5 to 30	A
L4006A1959					3		40 to 180		2 Fixed	B
L4006A1967		Yes	1/2	1-1/2			100 to 240 ³		5 to 30	A
L4006A2007					3		100 to 240		5 to 30	A
L4006E1042						Yes	130 to 270 ³	240		A
L4006E1067					3	Yes	130 to 270			A
L4006E1091					3	Yes	130 to 270			A
L4006E1125					3	Yes	100 to 200			D
L4006H1004					1-1/2		100 to 240 ³	240		D
L4008A1015					66		100 to 240 ³		5 to 30	A
L4008A1130					120		130 to 270		5 to 30	A
L4008E1156					66	Yes	130 to 270	250		A
L4008E1305					66	Yes	100 to 240	240		A
L4008E1313					66	Yes	100 to 200 ³			A
L4006B1007		SPST - N.O. (make on rise)	Yes	1/2	1-1/2		100 to 240		5 Fixed	A
L4006B1155				3		100 to 240		5 to 30	A	
L6006A1004	SPDT	Yes	1/2			100 to 240		5	A	
L6006A1012		Yes	1/2	1-1/2		100 to 240		5 to 30	A	
L6006A1145					3		100 to 240	240	5 to 30	A
L6006A1244					3		100 to 240		5 to 30	A
L6006C1018							65 to 200		5 to 30	A
L6008A1192					66		100 to 240	240	5 to 30	A
L6008A1242					66		100 to 2003		5 to 30	A

All mounting is universal horizontal or vertical mounting unless noted. All Tradeline Aquastats® include heat-conductive compound.

¹ Product Numbering

- 400X=SPST, 600X=SPDT
- X006=Thermowell Sense, X008=Remote Sense
- A Break on Rise
- B Make on Rise
- D Break on Rise w/o Cover
- E Break on Rise w/Manual Reset
- G Two SPDT
- H Make on Rise w/Strap-On Mount

² Capillary Length

If less than 3" then insulation depth of thermowell

³ All manual reset models comply with the CSD-1 requirement for Manual Reset. Devices with maximum Range of 200°F, 190°F 180°F are designed to meet local code requirements regarding maximum setpoints. Units having scale ranges above 240°F do not comply with ASME Section IV for boilers, use 240 Maximum range Aquastats.

⁴ Electrical Ratings

- A Millivolt: 0.25 A @ 0.25 to 12 Vdc; AFL: 8 A @ 120 Vac/5.1 A @ 240 Vac ALR: 48 A @ 120 Vac/30.6 A @ 240 Vac
- D Millivolt: 0.25 A @ 0.25 to 12 Vdc; AFL: 1.3 A @ 240 Vac/8 A @ 120 Vac; ALR: 48 A @ 120 Vac/30.6 A @ 240 Vac
- B AFL: 2.6 A @ 120 Vac/1.3 A @ 240 Vac; ALR: 15.6 A @ 120 Vac/7.8 A @ 240 Vac
- H AFL: 8 A @ 120 Vac/1.3 A @ 240 Vac; ALR: 48 A @ 120 Vac/30.6 A @ 240 Vac

	NOTES	CROSS-REFERENCE
Product Number ¹	Notes	OEM or Trade Product Number
L4006A1009		
L4006A1017		L4080B, L4080D Families, L4006A1058, L4006A1827, L4006A2015
L4006A1132		L4006A2023
L4006A1678		
L4006A1959		
L4006A1967		
L4006A2007		
L4006E1042	Canada Only	
L4006E1067		L4006E1091, L4006E1109, L4006E1117, L4006E1125, L4006E1133
L4006E1091		
L4006E1125		
L4006H1004	Bracket for Strap-On Mounting	
L4008A1015		
L4008A1130		
L4008E1156		L4008E1040, L4008E1248, L4008E1321
L4008E1305		L4008E1271, L4008E1313
L4008E1313	Meets Certain State Specific Boiler Inspector Requirements	
L4006B1007		
L4006B1155		L4006B1189, L4008B1163
L6006A1004		
L6006A1012		L6006A1160, L6006A1269, L6006A1301, L6006A1327, L6006A1335
L6006A1145	Horizontal Mount Only	L4006A1004
L6006A1244		
L6006C1018	Includes Surface Mount Using 1/4" NPT Female Threads or Surface Mount Through Base of Case	L6006C1034, L6006C1059
L6008A1093		
L6008A1192		

For a complete cross-reference, visit www.customer.resideo.com

Multi-Function Aquastat® Selection Guide

Product Number	FUEL		LOW LIMIT		HIGH LIMIT	
	Gas	Oil	Operating Range, Low Limit (°F)	Differential Temperature, Low Limit (°F)	Operating Range, High Limit (°F)	Differential Temperature, High Limit (°F)
L7224U1002		•	110 to 220	10 to 25	130 to 240	5 to 20 adj.
L6081A1036	•	•	110 to 220	10-25	130 to 240	10 fixed
L8148E1265	•				180 to 240	15 fixed
L8124E1016	•		110 to 220	10 to 25	130 to 240	10 fixed
L8148J1009	•				120 to 240	8 fixed
L8124A1007		•	110 to 220	10 to 25	130 to 240	10 fixed
L8124C1003		•	110 to 220	10 to 25	130 to 240	10 fixed
L8124G1020		•	110 to 220	10 to 25	130 to 240	10 fixed
L8124L1011		•	110 to 220	10 to 25	130 to 240	10 fixed
L8148A1017		•			140 to 240	8 fixed

* Replacement Sensors for the L7224U.

OS Number	Length
50001464-001	12"
50001464-004	36"
50001464-005	48"

		FEATURES AND FUNCTIONS				CROSS-REFERENCE
Product Number	Factory Stop (°F)	Switching Action	Anticipator Setting	Mounting	Notes	OEM Part Number
L7224U1002		3 SPST: High and Low Limit, Circulator	0.1 A	V/H/F	Universal Oil, Digital Display and Settings, Used with Oil Burner Applications, EnviraCOM® Communications	Replaces all members of these families: L8124A or C, L8148A or C, L7224A or C, L7248A or C, L8151A
L6081A1036		SPDT		H		L6081A1010, L6081A1069, L4081A1023, L4081A1148, L4081A1155, L4081A1171, L4081A1189, L4081A1197
L8148E1265		2 SPST: High Limit & Circulator	0.2 A	V		L8148E1158, L8148E1182, L8148E1216, L8148E1065
L8124E1016		2 SPST: High & Low Limit	0.2 A			
L8148J1009	240	2 SPST: High Limit & Circulator	0.2 A	V/H		
L8124A1007			0.2 A	V		L8124A1015, L8124A1049, L8124A1106, L8124A1114, L8124A1130, L8124A1155
L8124C1003		2 SPST: High & Low Limit	0.2 A	H		L8124C1094, L8124C1102
L8124G1020		2 SPST: High & Low Limit	0.2 A	V		L8124G1004, L8124G1012
L8124L1011		2 SPST: High & Low Limit	0.2 A	H		L8124L1003, L8124L1029, L8124G1038, L8124G1046
L8148A1017	240	2 SPST: High Limit & Circulator	0.2 A	H		L8148A1165, L8148A1157, L8148A1124, L8148A1090, L8148A1082, L8148A1009

For a complete cross-reference, visit www.customer.resideo.com

AquaPUMP

With our popular zone valves, Aquastats, and the energy-saving Aquatrol™ you can meet just about every boiler room need with just one brand. AquaPUMP is the latest in Honeywell's complete lineup of hydronic heating solutions.

AquaPUMP eliminates the guesswork in the boiler room. With three sizes, multiple speeds for each size and the unique Twist-To-Fit flange, AquaPUMP has you covered for every application. And because a single AquaPUMP can replace a wide range of competitive models, you can handle nearly all retrofits with just one brand.

- Twist-To-Fit Universal Flange rotates 90° to fit every application
- Threaded conduit connection
- Stainless steel plate and can
- Impeller engineered for a quieter, more efficient operation
- Increased torque for startup after time offline
- Ceramic bearings and shaft
- Check valve available for all pumps separately
- 5-year Limited Warranty



Use this cross-reference tool to meet your installation needs. Each Honeywell circulator replaces both regular and rotated flange models.

HONEYWELL			GRUNDFOS		TACO		BELL & GOSSETT	ARMSTRONG	WILO	
Model	Pump Length	Speed	Single Speed	3-Speed	Single Speed	3-Speed			Single Speed	3-Speed
PC3F1558IUF00	6.5"	High	UP-42F UP-42F-FC	UPS15-58 High UPS15-58-FC High	005F 007F 008F 008F-IFC	00R High 00R Med	NRF-22 LR-20WR	Astro 30 Astro 30-3 Astro 50-3 Astro 230C1	Star 16	Star S16 High
		Medium	UP15-42FC	UPS15-58 Low UPS15-58-FC Low	005F-IFC 006F 006F-IFC 007F-IFC	00R Low	NRF9F/LW NRF-25 Med			Star S16 Med
		Low	UP15-18F UP15-18F-FC							
PC3F2699IUF00	6.5"	High	UP26-96F UP26-96F-FC UP26-116F UP26-116F-FC	UPS26-99 High UPS26-99-FC High	0011F 0011F-IFC 0013F 0013F-IFC		NRF-36 Med NRF-45 Med H-41	E7 Astro 50 Astro 50-3		S21 High
		Medium	UP26-64F UP26-99FC	UPS26-99 Low UPS26-99-FC Low	0014F 0014F-IFC		Series 100			S21 Med
		Low					NRF-33			Star S21 Low
PC3F4344IUF00	8.5"	High	UP43-44F UP43-44F-FC	UPS43-44 High UPS43-44-FC High			HV H-32	E16		
		Medium		UPS43-44 Med UPS43-44-FC Med	0010F 0012F-IFC	0010 Med	NRF-33	H32		
		Low		UPS43-44 Low UPS43-44-FC Low	0010F-IFC	0010 Low				

The information in this table is based on publicly available information as of the date of this publication. Honeywell is not liable if information is found to be incorrect. If the cross referenced model uses a flow check valve, then use a flow check with the Honeywell model as well.



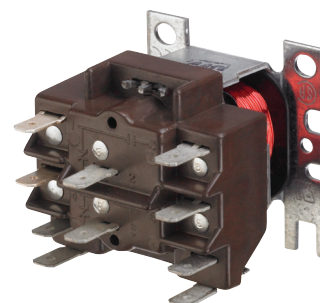
Relays/Contactors/Transformers

Honeywell offers a complete range of relays, contactors and transformers for all your residential and commercial HVAC applications. All Honeywell products are designed to exceed safety and industry life cycle standards. In order to meet these criteria, a statistically significant sample of Honeywell products are tested to failure and to our stringent qualification requirements. This testing methodology enables Honeywell to verify that these products will exceed industry standards.

Relays

Honeywell's switching relays are available in multiple configurations for various applications. For whatever you need — general purpose relays or electric heat relays — Honeywell has you covered.

- **General Purpose and Heavy-Duty Switching Relays** — R4222, R8222, R4228 and R8228 for use in refrigeration and air-conditioning equipment, appliances and vending machines
- **Time Delay Relay** — ST82 combines the R8222 or R8228 relay for use in compressor-run air conditioning and heat pump systems; this product features an electronic timer that delays blower shut off after the compressor has shut off.
- **Fully Enclosed Line and Low-Voltage Fan Relays** — R4225 and R8225 for control of line voltage fan motors and auxiliary circuits.

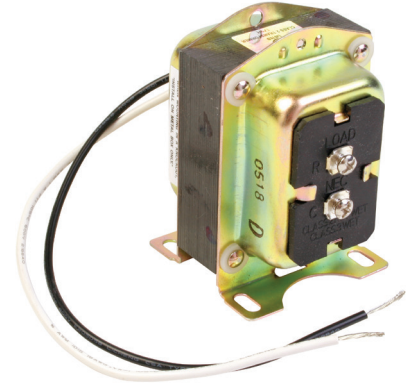


RELAYS								
Input Voltage/Coil Voltage	Switching	Product Number	Full Load Amp Rating	Frequency	Dimensions (in.) H x W x D	Electrical Connections (main)	Special Features	
24 Vac	DPST N.O.	R8228D1018	5.5	A	1 7/8 x 2 5/32 x 2 3/8	Q		
24 Vac	DPDT (1 P & 1 P Duty)	R8222V1003	12				2 7/32 x 2 1/16 x 2 9/16	
	DPDT — Pilot Duty	R8222N1011						
	DPDT	R8222D1014						
	DPDT	ST82D1004						
	SPDT	R8222B1067						
120 Vac	DPDT — Pilot Duty	R4222N1002	14		1 7/8 x 2 5/32 x 2 3/8			
	DPDT	R4222D1013						
	SPDT	R4222B1082						
208/240 Vac	DPDT	R4222D1021						
24 Vac	SPDT	R8225A1017	14	2 11/16 x 2 1/2 x 3 7/16	L			
	DPST N.O.	R8225D1003						
24 Vac	SPDT	R8228B1012	18	A	1 7/8 x 2 5/32 x 2 3/8	Q		
ELECTRIC HEAT RELAYS								
24 Vac	DPST	R8229A1005	7	B	2 3/16 x 2 3/32 x 2 1/4	CHS		
		R8229A1021						
ELECTRIC FURNACE SEQUENCER								
24 Vac		R8330D1039	7.2	B	3 1/16 x 4 13/16 x 2 11/32	T		
ELECTRIC HEAT CONTACTOR								
24 Vac	DPST	R8246A1038	30		2 3/16 x 2 1/4 x 3 5/16	Q, S		

Frequency:	A — 60 Hz/50 Hz; B — 60 Hz, C — 50 Hz	SPST:	Single Pole Single Throw
Approvals:	UL, CSA	DPST:	Double Pole Single Throw
Temp Rating:	-20° F to +150° F; 115° F max for R8225	DPDT:	Double Pole Double Throw
Connectors:	CHS — Combination Head Screw; L — Leadwires; Q — Quick connect; T — Terminals	SPDT:	Single Pole Double Throw

Transformers

Honeywell offers NEMA — standard DC20-1992 and general purpose transformers. These transformers are available with single or multiple input voltages and with foot, conduit and plate mounting options. Transformers with circuit breakers that can be manually reset by pressing a button are also available. Honeywell also designs transformers for specific environmental requirements and with specialized termination options.



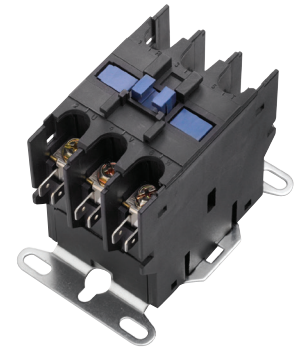
UNIVERSAL TRANSFORMERS									
Electrical Ratings (VA)	Electrical Ratings (Input Voltage)	Product Number	NEMA Rated	Mounting	Main Connections	Secondary Connections	Frequency	Dimensions (in.) H x W x D	NOTES
40 VA	208/240 Vac	AT72D1733	Yes	M	L	S	A	3 7/32 x 2 7/32 x 3 1/16	Only in Canada
50 VA	120/208/240 Vac	AT87A1106	Yes	M			A	2 15/16 x 2 7/32 x 2 1/4	Built-in protection; Primary winding burnout
20 VA	120/208/240 Vac	AT120A1004	No	M			B	2 7/8 x 1 7/8 x 2 15/16	Metal end bells
40 VA	120/208/240 Vac	AT140A1018	No	M			B	3 3/16 x 2 3/8 x 3 1/8	Metal end bells
75 VA	120/208/240 Vac	AT175A1008	No	M			B	3 3/16 x 2 3/8 x 3 5/8	Metal end bells
TRANSFORMERS									
19 VA	120 Vac	AT20A1123	Yes	F	L	L	A	2 x 2 1/4 x 1 7/8	
40 VA	120 Vac	AT72D1006		P		S		3 7/32 x 2 7/32 x (1 1/16 into x 2 in. above plate)	
		AT72D1089		F		S		3 7/32 x 2 7/32 x 3 1/16	
		AT72D1188		P		L		3 7/32 x 2 7/32 x 2 15/16	
		AT72D1683		M		S			
		AT72D1956		M		L		3 7/32 x 2 7/32 x 3 1/16	Only in Canada
	208/240 Vac	AT72D1691	M	S					
48 VA	277 Vac	AT87A1189	No	F	L	L	B	2 15/16 x 2 7/32 x 2 1/4	Energy limiting overload protection
	480 Vac	AT87A1155		F		L		Energy limiting overload protection	
20 VA	120 Vac	AT120B1028		F		L		1 11/16 x 3 3/16 x 1 3/4	Metal end bells
40 VA	120 Vac	AT140A1000		M		S		3 3/16 x 2 3/8 x 3 1/8	Metal end bells
		AT140B1206		F		L		1 11/16 x 3 1/2 x 1 3/4	Plastic end caps
	120/208/240 Vac	AT140B1214		F		L		1 11/16 x 3 1/2 x 1 3/4	Plastic end caps
50 VA	120/208/240 Vac	AT150A1007	M	S	1 11/16 x 3 3/16 x 1 3/4	Metal end bells			
		AT150F1022	M	L	3 3/16 x 2 3/16 x 3 5/8	Button for resetting circuit breaker & metal end bells			
		AT150F1030	M	L	3 3/16 x 2 3/16 x 3 5/8	Button for resetting circuit breaker & metal end bells			
	208/277/480 Vac	AT150F1030	M	L	3 3/16 x 2 3/16 x 3 5/8	Button for resetting circuit breaker & metal end bells			
	277 Vac	AT150B1252	F	L, Q	L, Q	A	1 11/16 x 3 1/2 x 1 3/4	Plastic end caps	
75 VA	120/208/240 Vac	AT175F1023	No	M	L	L	B	3 3/16 x 2 3/16 x 3 15/16	Button for resetting circuit breaker & metal end bells
		AT175F1031		M		L		3 3/16 x 2 3/16 x 3 15/16	Button for resetting circuit breaker & metal end bells
	AT88A1005	F		L		A	2 15/16 x 2 3/16 x 3 5/16	Internally fused secondary for overload protection	
	AT88A1021	F		L					
	AT88A1047	F		L					
Frequency:		A — 60 Hz/50 Hz; B — 60 Hz;							
Mounting:		C — Conduit ; F — Foot; P — Plate; M — Foot, Conduit, Plate (F models do not come with plate options)							
Connections:		L — Leadwires (9 in. to 13 in.); Q — Quick Connects; S — Screw Terminals							
Approval:		UL, CSA							

Relays/Contactors/Transformers

Contactors

Honeywell offers definite-purpose contactors for heating, cooling and refrigeration applications.

- Replace most competitive models
- Compact size for easier installation
- Meet ARI 780 and UL/CSA/CUR standards.
- Box lugs for easier installation (Deluxe PowerPRO)
- Sealed coils extends life (Deluxe PowerPRO)
- Baked finish for added durability

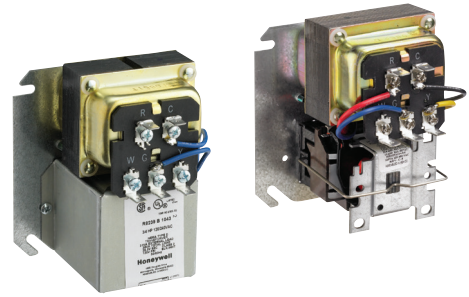


ECONOMY CONTACTORS								Cross Reference Information					
Poles	Contact Ratings (AFL @ 240, 277, 480, 600 Vac)	Input Voltage/Coil Voltage	Product Number	Dimensions (in.) H x W x D	Main Connections	Coil Connections	Contact Ratings (Resistive @ 240, 277, 480, 600 Vac)	Honeywell	Cutler Hammer	Furnas	Mars		
1 with shunt	30	24 Vac	DP1030A1001	2 7/32 x 2 1/2 x 3 5/16	Screw Terminal	Q	48 A	DP1030A1000	C25CNB130T	45EG10AJA	91320, 17311		
2	30	24 Vac	DP2030A1004	3 1/4 x 3 5/8 x 3 7/8			48 A	DP2030A1003	C25BNB230T	45EG20AJ	61354, 17321		
		120 Vac	DP2030B1003	2 7/32 x 3 5/16 x 2 5/32			40 A	DP2030B1002	C25BNB230A	45EG20AF	61346, 17322		
2	40	208/240 Vac	DP2030C1002	2 7/32 x 2 1/2 x 3 5/16			40 A	DP2030C1001	C25BNB230B	45EG20AG	61347, 17323		
		24 Vac	DP2040A1003	2 3/8 x 3 5/16 x 2			50 A	DP2040A1002	C25BNB240T	45GG20AJ	61355, 17421		
		120 Vac	DP2040B1002				50 A	DP2040B1001	C25BNB240A	45GG20AF	61356, 17422		
		208/240 Vac	DP2040C1001				50 A	DP2040C1000	C25BNB240B	45GG20AG	61357, 17423		
POWERPRO CONTACTORS — ARI 780/790 RATED													
1 with shunt	25	24 Vac	DP1025A5006	2 7/32 x 2 1/2 x 3 5/16			Box Lug	Q	30 A	DP1025A5005	Not Available	45DG10AJA	61315
2	30		DP1030A5014	2 7/32 x 2 1/2 x 3 5/16					48 A	DP1030A5013	Not Available	45EG10AJA	13101, 61320, 61720
	40		DP1040A5005	2 23/64 x 2 1/2 x 3 5/16	50 A	DP1040A5004			Not Available	45GG10AJA	61330		
2	20	24 Vac	DP2020A5022	2 7/32 x 2 1/2 x 3 5/16	30 A	DP2020A5021			Not Available	45CG20AJ	61310		
		120 Vac	DP2020B5039	2 7/32 x 2 1/2 x 3 5/16	30 A	DP2020B5038			Not Available	45CG20AF	61336, 14122		
		24 Vac	DP2030A5013	3 1/4 x 2 5/8 x 3 3/4	DP2030A5012	60510							
	30	120 Vac	DP2030B5004	2 7/32 x 3 5/16 x 2 5/32	48 A	DP2030B5003			C25DND230A	45EG20AF	61346, 13105,		
		208/240 Vac	DP2030C5003	2 7/32 x 2 1/2 x 3 5/16	48 A	DP2030C5002			C25DND230B	45EG20AG	61347, 13106, 60512, 60032		
		208/240 Vac	DP2030C5011		DP2030C5010	Not Available			Not Available	60512 91323			
277 Vac	DP2030D5002	DP2030D5001	Not Available		Not Available	60153							
2	40	24 Vac	DP2040A5004	2 23/64 x 3 3/16 x 1 15/16	50 A	DP2040A5003	C25DNF240T	45GG20AJ	13107, 91421, 61355, 61755, 60525,				
		120 Vac	DP2040B5003		DP2040B5002	C25DNF240A	45GG20AF	13108, 91422, 61356, 61756,					
		208/240 Vac	DP2040C5002		DP2040C5001	C25DNF240B	45GG20AG	13109, 91423, 61357, 61757, 60527, 14423					
3	30	24 Vac	DP3030A5004	3 7/64 x 3 5/8 x 2 13/32	Q, S	40 A	DP3030A5003	C25DND330T	42BF35AJ	61430, 13113, 60515, 13007, 91331			
		120 Vac	DP3030B5003				DP3030B5002	C25DND330A	42BF35AF	61431, 13114, 91332			
		208/240 Vac	DP3030C5002				DP3030C5001	C25DND330B	42BF35AG	61432, 13115, 91333, 60517, 13009			
	40	24 Vac	DP3040A5003			4 7/16 x 5 x 3 3/4	50 A	DP3040A5002	C25DNF340T	42CF35AJ	60530, 61445, 13013 91431		
		120 Vac	DP3040B5002					DP3040B5001	C25DNF340A	42CF35AF	61446		
		208/240 Vac	DP3040C5001					DP3040C5000	C25DNF340B	42CF35AG	60532, 60182, 61447, 13015, 91433		
	50	24 Vac	DP3050A5002			4 7/16 x 5 x 3 3/4	63 A	DP3050A5001	C25DNJ350T	42DF35AJ	61460, 13619, 91531		
		120 Vac	DP3050B5001					DP3050B5000	C25DNJ350A	42DF35AF	61461		
		208/240 Vac	DP3050C5010					DP3050C5009	C25DNJ350B	42DF35AG	60217, 60202, 61462, 13621, 91533		
	60	24 Vac	DP3060A5001			4 7/16 x 5 x 3 3/4	75 A	DP3060A5000	C25FNF360T	42EF35AJ	61470 13625 91631		
		120 Vac	DP3060B5010					DP3060B5009	C25FNF360A	42EF35AF	61471		
		208/240 Vac	DP3060C5009					DP3060C5008	C25FNF360B	42EF35AG	60227, 60207, 61472, 13627, 91633		
90	120 Vac	DP3075B5016	4 7/16 x 5 x 3 3/4	95 A	DP3075B5015	C25FNF375A	42FE35AF	60237, 61476					
	208/240 Vac	DP3075C5015			DP3075C5014	C25FNF375B	42FE35AG	60245, 61477, 13242, 91733					
	120 Vac	DP3090B5007			120 A	DP3090B5006	C25GNF390A	42GE35AF	61491				
24 Vac	DP4040A5002	DP4040A5001	C25ENF440T	42CF25AJ		61450, 13016							
120 Vac	DP4040B5001	DP4040B5000	C25ENF440A	42CF25AF		61451							
4	40	208/240 Vac	DP4040C5010	2 5/8 x 3 3/4 x 3 7/64	50 A	DP4040C5009	C25ENF440B	42CF25AG	61452				

Connectors:	BHS — Binding Head Screw; Q — Quick Connect; SS — Sems Screw; CHS — #10-32 Combination Head Screw; S — #6 Screw; TCS — Terminal Clamp Screw; LC — Lug Connector	Approvals:	UL, CSA
Temp Rating:	-4° F to 149° F	ARI - 780:	500,000 cycle mechanical life; 200,000 cycle electrical life; 10,000 cycle recycle life

Fan Centers

For fan centers (relay and transformer combination), R8285 and R8239 NEMA rated units offer low-voltage control of line-voltage fan motors and auxiliary circuits in heating, cooling or air-conditioning systems.



FAN CENTERS									
Electrical Ratings (VA)	Electrical Ratings (Input Voltage)	Switching	Product Number	NEMA Rated	Dimensions (in.) H x W x D	Main Connections	Secondary Connections	Frequency	Special Features
40 VA	120 Vac	DPDT	R8239B1043	Yes	4 1/2 x 4 3/16 x 3 3/32	L	L	A	Super Tradeline*
		DPST	R8239D1007						Available only in Canada
		DPST (1 Power, 1 Pilot)	R8239D1015						Tradeline
		SPDT	R8239A1052						Tradeline
50 VA	120/208/240 Vac	DPDT	R8239B1076	No	4 3/16 x 4 1/2 x 2 13/16	L	L	A	Super Tradeline
40 VA	120 Vac	SPDT	R8285A1048						Tradeline
	120/208/240 Vac	DPDT	R8285B1053						Tradeline
50 VA	120 Vac	DPST	R8285D5001						Tradeline

Frequency:	A — 60 Hz/50 Hz; B — 60 Hz	SPST:	Single Pole Single Throw
Approvals:	UL, CSA	DPST:	Double Pole Single Throw
Temp Rating:	-20° F to +105° F	DPDT:	Double Pole Double Throw
Connectors:	L — Leadwires	SPDT:	Single Pole Double Throw
Mounting:	Standard 4 x 4 in. junction box		

* Super Tradeline models include extra hardware.

Auxiliary Switches

Honeywell Auxiliary Switches work Honeywell models of 3-pole contactors.



AUXILIARY SWITCHES						
Product Number	Circuits	Configuration	Dimensions (in.) H x W x D	Contact Ratings (Resistive)	Maximum (inrush) Current at 120/240/480/600 V	Use With
DP3AUX-1NO	1	Normally Open snap-on	2 26/32 x 2 17/32 x 7/16	10 A	60/30/15/12 Amps	DP3030 – DP3090 Contactors
DP3AUX-1NC	1	Normally Closed snap-on				
DP3AUX-1NO-1NC	2	Normally Closed/Normally Open snap-on				
DP3AUX-2NO		Normally Open snap-on				
DP3AUX-2NC		Normally Closed snap-on				

Support



Online Tools

Find everything you need to be successful in selling Honeywell products online. Product information, cross-references, demos and more are available at www.customer.resideo.com.



Customer Service

Honeywell provides toll-free access to product application, installation and support experts.

Technical Support: 1-800-468-1502

Customer Service: 1-888-793-8193

Training

Honeywell offers a variety of on-site and web-based training options at www.customer.resideo.com.

Rewards

Make your business count with Honeywell's Contractor PRO™ Program. Honeywell's Contractor PRO program gives contractors reward points (\$) back on Honeywell purchases. Visit www.contractorpro.com for more information.

Sales Literature

With Honeywell, you'll have access to sales materials that you can use to help grow your business. Visit www.literature.honeywell.com.

Phone:

Residential Technical Support:
1-800-468-1502

Sales Support: 1-800-328-5111

Customer Service: 1-888-793-8193

Residential Zoning: 1-800-828-8367

Online:

www.customer.resideo.com

www.forwardthinking.honeywell.com

www.literature.honeywell.com

Contractor PRO:

Phone: 1-800-919-4835

Fax: 1-800-745-4999

Exclusive Technical Support
for Contractor PRO members:
1-877-880-3383

www.contractorpro.com

For more information

Call toll-free **1-800-328-5111**
e-mail info@honeywell.com or
visit www.customer.resideo.com

Honeywell Home

In the U.S.:
1985 Douglas Drive North
Golden Valley, MN 55422
www.honeywell.com

Follow us on Facebook: [Facebook.com/HoneywellHomePro](https://www.facebook.com/HoneywellHomePro)
Follow us on Twitter: @HoneywellPro
Learn: [YouTube.com/HoneywellHomePro](https://www.youtube.com/HoneywellHomePro)

63-9575 | Rev | 08/2018
© 2018 Honeywell International Inc.

Honeywell