

DEHUMIDIFICATION CONTROL

A dehumidification control accessory 2HU06700124 may be used with variable speed air handlers or furnaces wired conventionally in high humidity areas. This control works with the variable speed indoor unit to provide cooling at a reduced air flow, lowering indoor coil temperature and increasing latent capacity. The humidistat in this control opens the humidistat contacts on humidity rise. To install, refer to instructions packaged with the accessory. Prior to the installation of the dehumidification control, the HUM STAT jumper on the indoor variable speed air handler or furnace control board must be set to YES.

During cooling, if the relative humidity in the space is higher than the desired set point of the dehumidification control, the variable speed blower motor will operate at a lower speed until the dehumidification control is satisfied. A 40-60% relative humidity level is recommended to achieve optimum comfort.

If a dehumidification control is installed, it is recommended that a minimum airflow of 325 cfm/ton be supplied at all times.

If wired using communication, refer to the Hx3 thermostat installation manual for dehumidification settings.

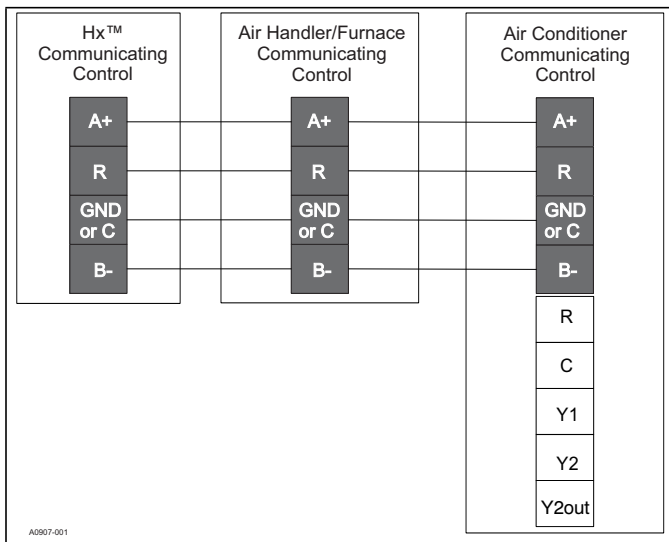


FIGURE 16: 19 SEER 2-Stage Only - Communicating AC with Communicating Air Handler or Furnace

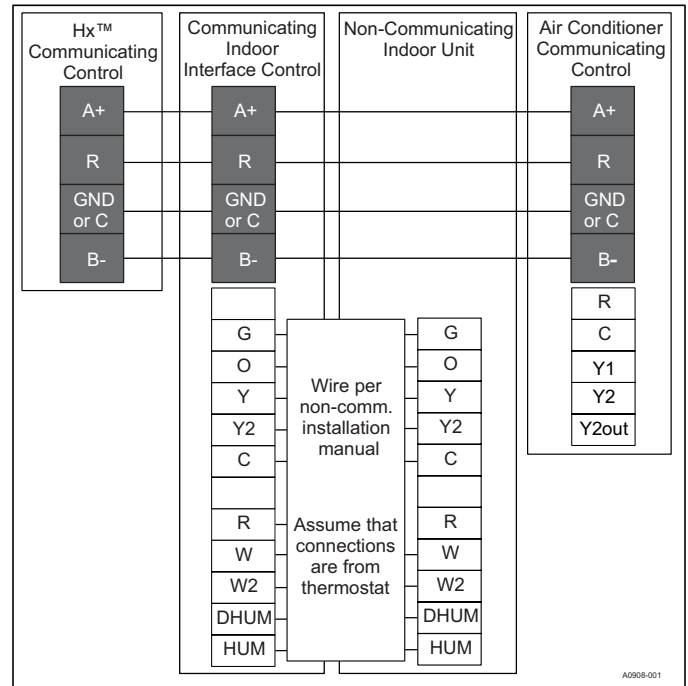


FIGURE 17: 19 SEER 2-Stage Only using Communicating Interface Control

INDOOR CFM CONFIGURATION

For proper system operation, the indoor CFM must be set properly.

The recommended airflow settings for each outdoor units size and associated match can be found in the Outdoor Unit Technical Guide.

Manually setting the airflow on the Indoor Control is required with the Hx™ communicating thermostat.

Set the cooling speed per the instructions defined in the air handler or furnace. Verify the airflow, after the configuration has be set on the Indoor Control.

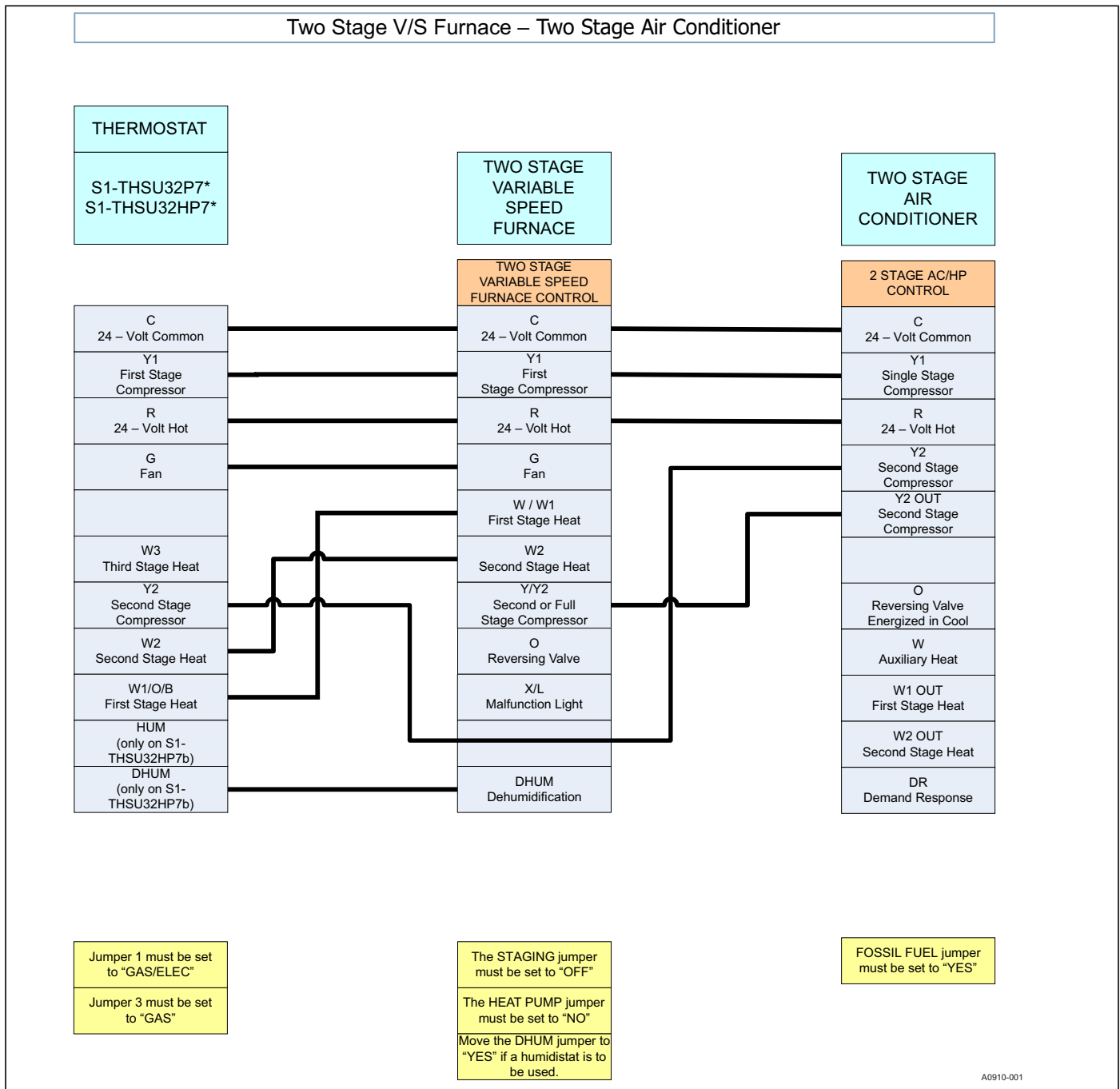


FIGURE 18: Thermostat Chart - Two Stage AC – Two Stage Furnace

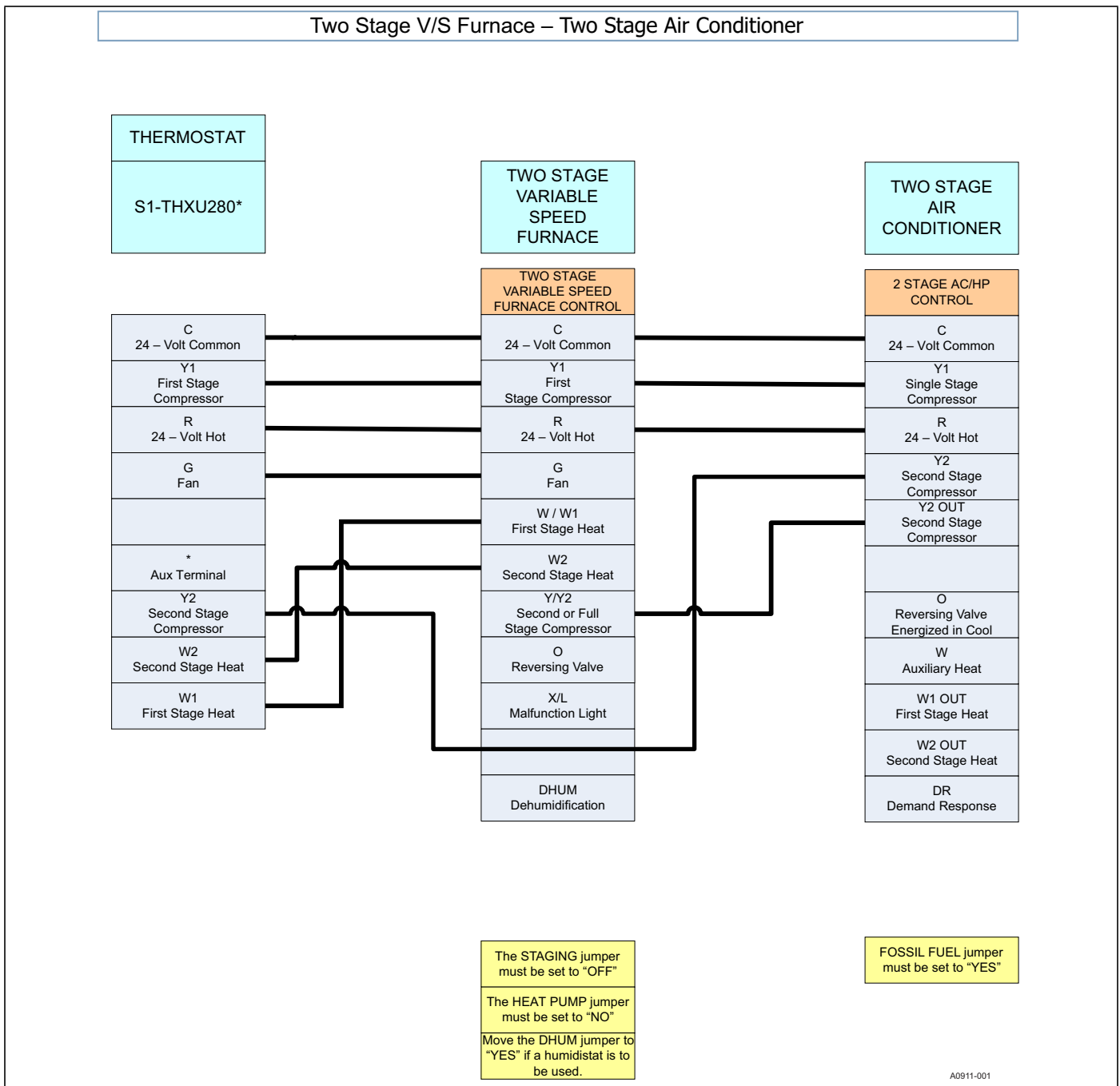


FIGURE 19: Thermostat Chart - Two Stage AC – Two Stage Furnace

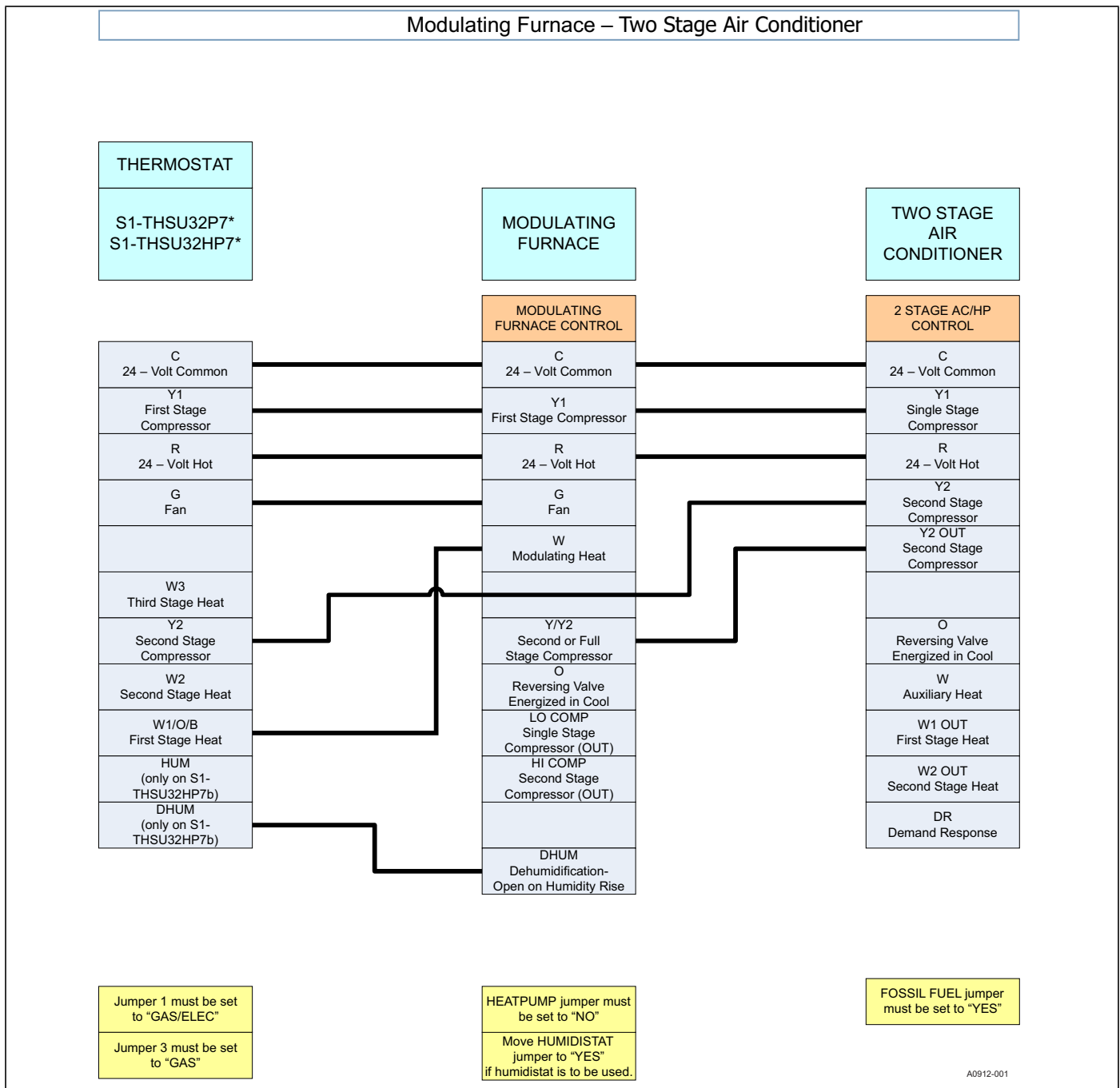
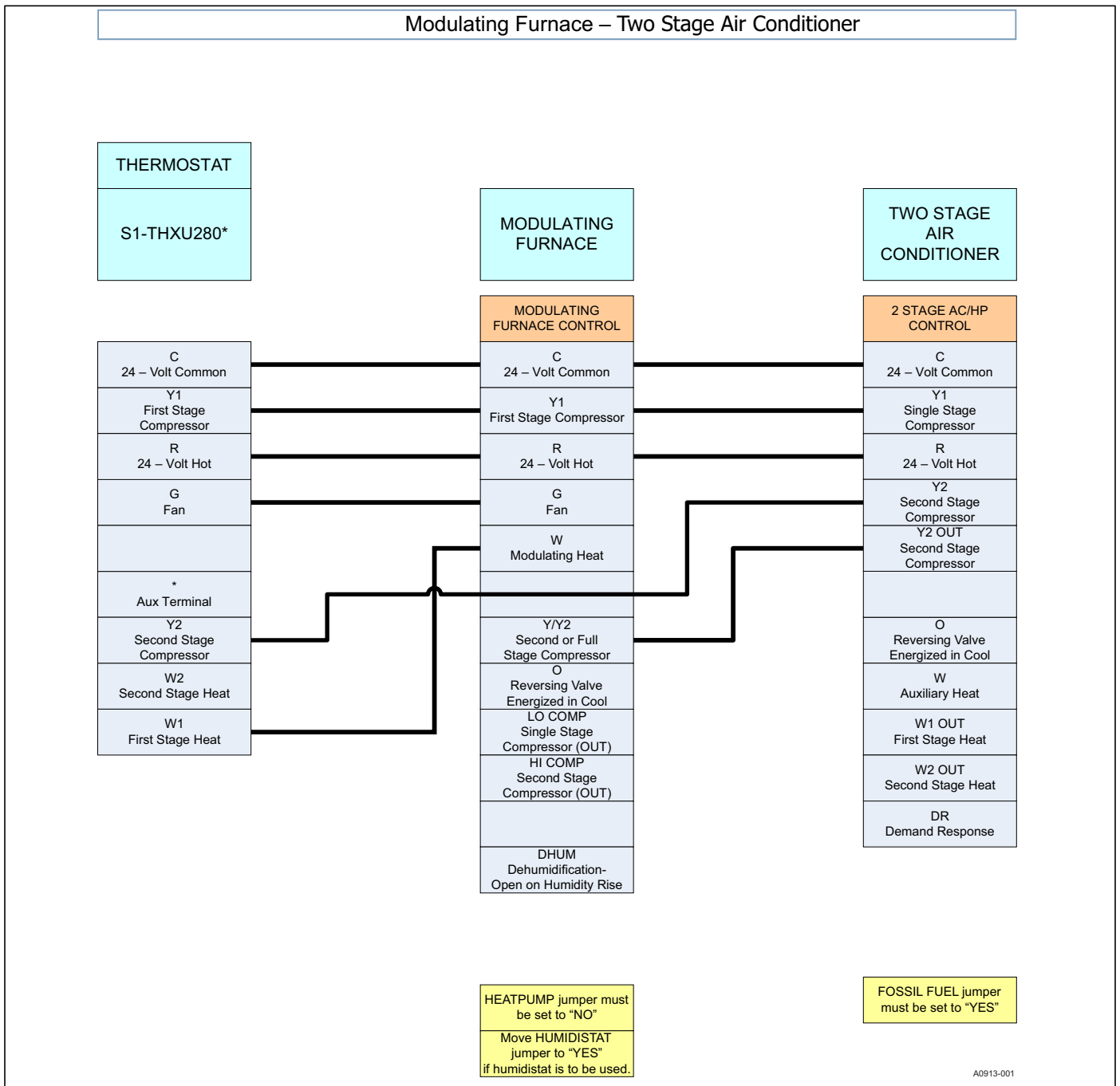


FIGURE 20: Thermostat Chart - Two Stage AC – Modulating Furnace



A0913-001

FIGURE 21: Thermostat Chart - Two Stage AC – Modulating Furnace

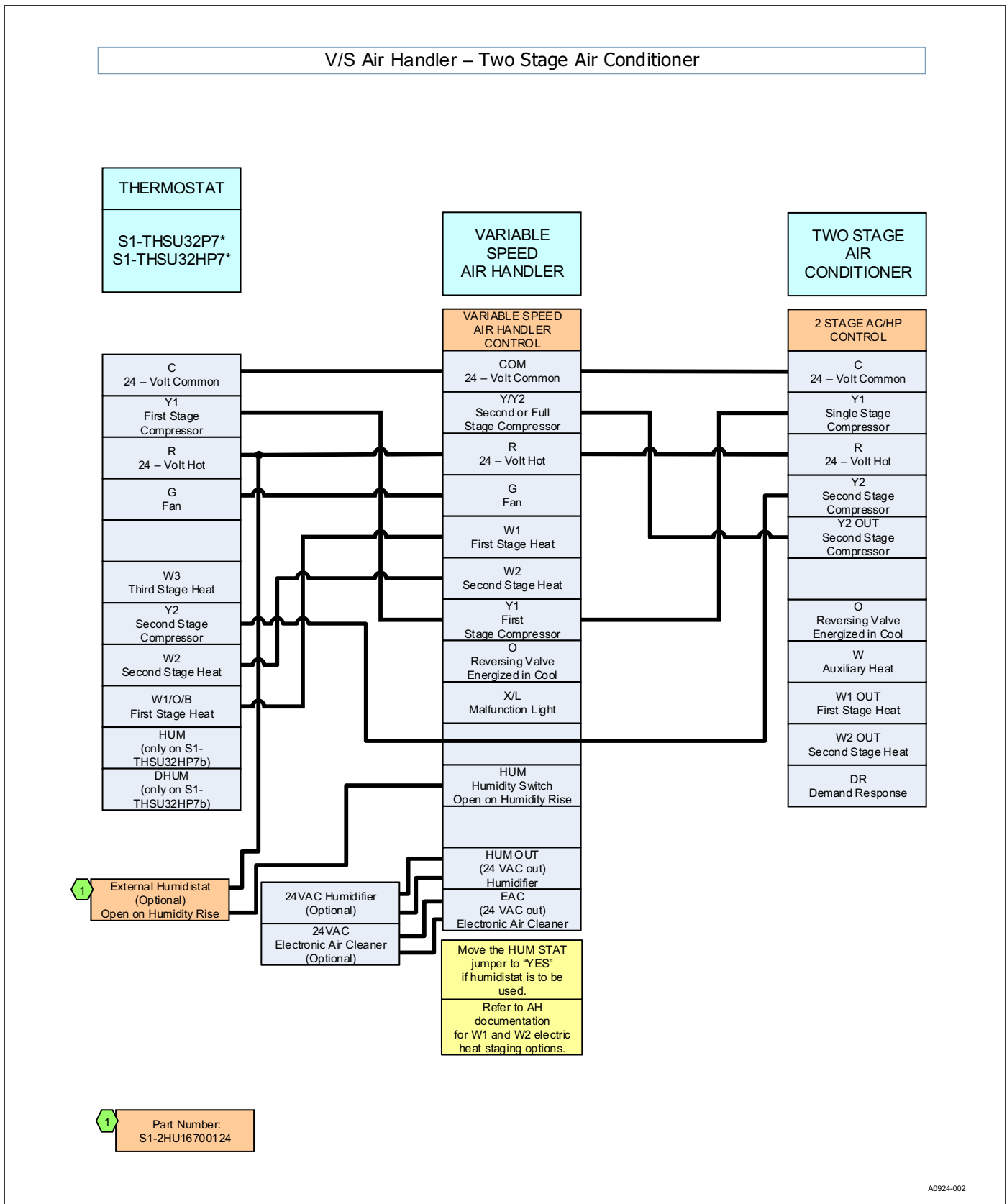


FIGURE 22: Thermostat Chart - Two Stage AC – Variable Speed Air Handler

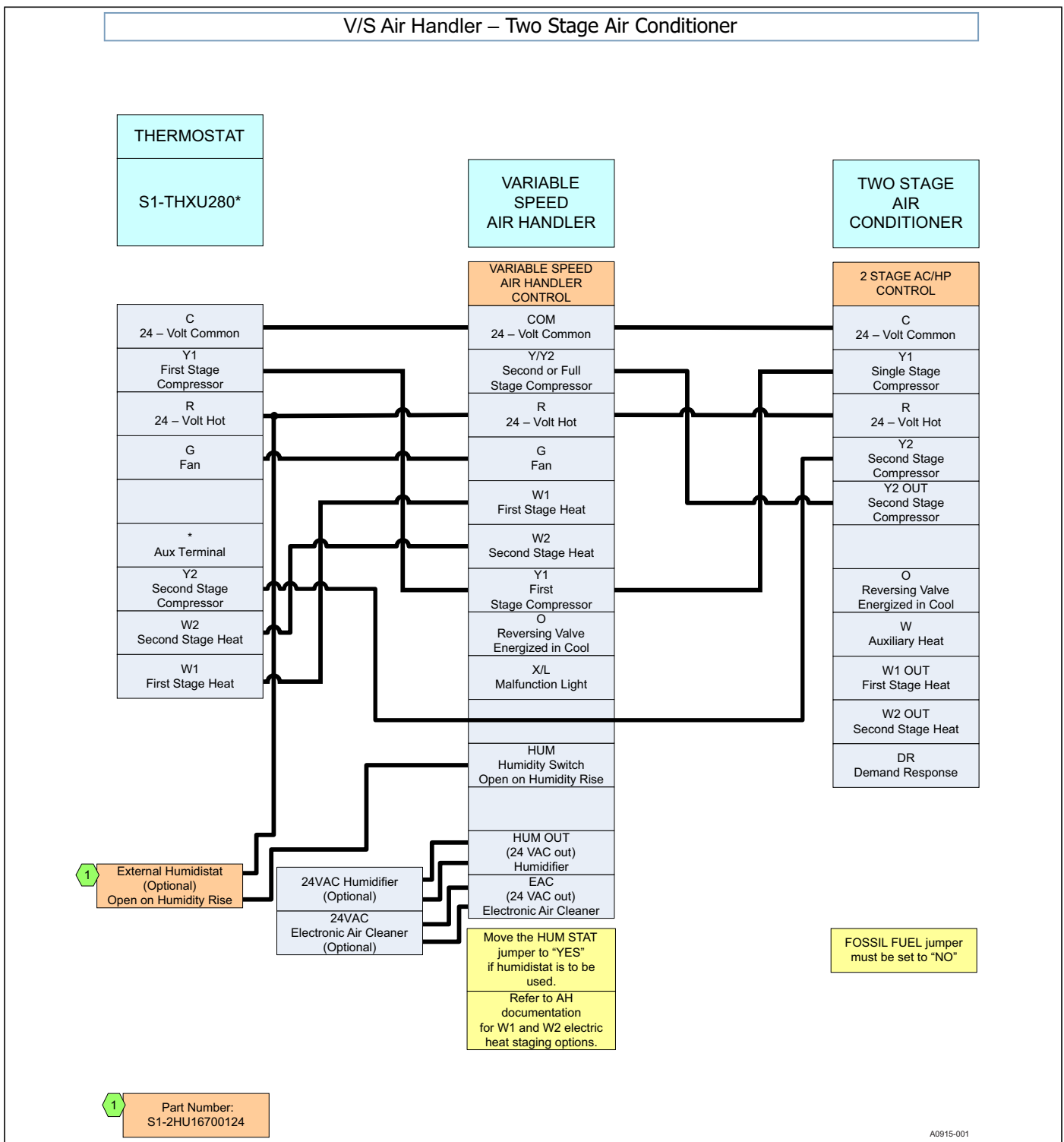


FIGURE 23: Thermostat Chart - Two Stage AC – Variable Speed Air Handler