

SUBMITTAL DATA SHEET

SINGLE PACKAGE HEAT PUMP/GAS HEAT 14 SEER, 11 EER – R-410A – 2 TO 5 TONS MODELS: PHG4*24 TO 60 – 1 PHASE

JOB NAME:		LOCATION:	
PURCHASER:		ORDER NO:	
ENGINEER:			
SUBMITTED TO:	FOR:	REF:	APPROVAL: CONSTRUCTION:
SUBMITTED BY:		DATE:	
UNIT DESIGNATION:		SCHEDULE NO.	MODEL NO.

PRODUCT DATA

Cooling Performance	
Total Capacity _____	MBH
Sensible Capacity _____	MBH
Outdoor Design Temp _____	°F DB/WB
Total Supply Air _____	CFM
Temp. of Air Entering _____	
Evaporator Coil _____	°F DB/WB
Power Input Req. _____	kW
(Less blower motor) _____	
Heating Performance	
Gas Fired Heat Exchanger _____	
Input/Output Capacity _____	BTUH
Supply Air Blower Performance	
Total Supply Air _____	CFM
Total Resistance External to Unit _____	IWG
Blower Speed (Circle) 1 2 3 4 5	
Motor Rating _____	HP
Power Input Req. _____	Watts
Electrical Data	
Power Supply _____ / _____ / _____	
Total Unit Ampacity _____	Amps
Minimum Wire Size _____	AWG
Max. Overcurrent Device _____	
Fuse _____ Circuit Breaker _____	Amps
Overcurrent Device _____	
<input type="checkbox"/> Fuses <input type="checkbox"/> Circuit Breaker	
Unit Weight	
Total Unit Weight (Operational) _____	LBS

FEATURES

- All models use R-410A refrigerant.
- All models are single stage cooling and single stage heat pump heating with gas heat backup.
- All models are rated at 81% AFUE in gas heating. All models have 14.0 SEER, 11.0 EER, and 8.0 HSPF ratings for heat pump operation.
- All models meet California Low-Nox requirements of 40 ng/J emission level for Air Quality Management Districts.
- Compact design cabinet with two footprints for installation flexibility.
- Easily convertible from side to bottom supply and return connections.
- All models have bottom and/or side electrical and gas utility connections.
- The unit cabinet is constructed of G90 powder painted steel, certified at 1000 hour salt spray test per ASTM-B-117 standards.
- All models have removable base rails with built-in rigging and shipping provisions.
- Attractive cabinet design with single-piece "watershed" top cover to extend cabinet life and deter water collection.
- All models have stamped slotted design coil guards for superior impact protection during transit and after installation.
- All models use a standard ECM indoor fan motor with slide out blower assembly.
- Demand defrost curves are pre-loaded into the demand defrost control for optimized performance based on unit capabilities.
- The compressor is internally protected against high pressure and temperature.
- Outdoor coils are constructed of rifled copper tubes and enhanced aluminum fin for long-lasting durability and efficient operation.
- Indoor coils use tin-coated copper tubing with aluminum fins for effective heat transfer.
- Gas heat exchangers use corrosion-resistant, stainless-steel tubular construction for long-life, trouble-free operation.
- Post purge induced draft exhausts combustion products from the heat exchanger to prolong the heat exchanger life.
- Spark to burner ignition means no pilot assembly is required, providing more consistent gas ignition.
- Long-life, permanently lubricated indoor and outdoor fan motor bearings do not require annual maintenance.
- The non-corrosive condensate pan is internally sloped to meet strict requirements of the ASHRAE 62-89 Indoor Air Quality standard.
- Individual access panels make servicing easy.

WARRANTY SUMMARY*

Extended 10-Years limited parts and compressor warranty
Lifetime gas heat exchanger warranty with registration.

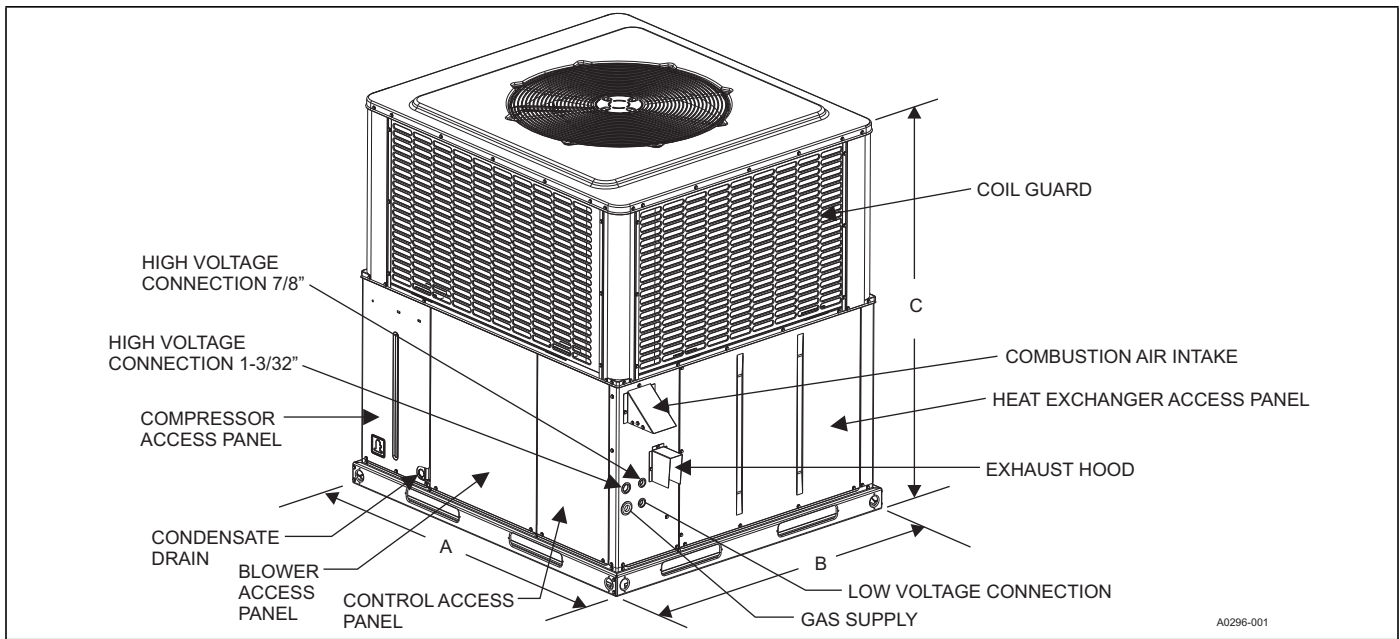
* Extended warranty requires online registration within 90 days of purchase for replacement or closing for new home purchase. See limited warranty certificate in User's Information Manual for details.

Unit Clearances^{1 2}

Direction	Distance (in.)	Direction	Distance (in.)
Top ³	36	Power Entry (Right Side)	36
Side Opposite Ducts	36	Left Side	24
Duct Panel	0	Bottom ⁴	1

- A 1" clearance must be provided between any combustible material and the supply air duct work.
- The products of combustion must not be allowed to accumulate within a confined space and recirculate.
- Units must be installed outdoors. Overhanging structures or shrubs must not obstruct outdoor air discharge outlet.
- Units may be installed on combustible materials made from wood or class A, B, or C roof covering materials only if factory base rails are left in place as shipped.

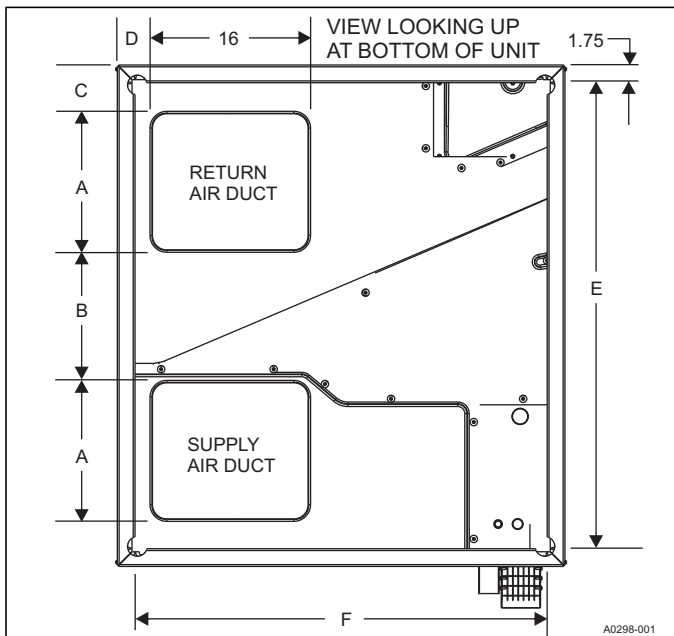




UNIT DIMENSIONS AND ACCESS LOCATIONS

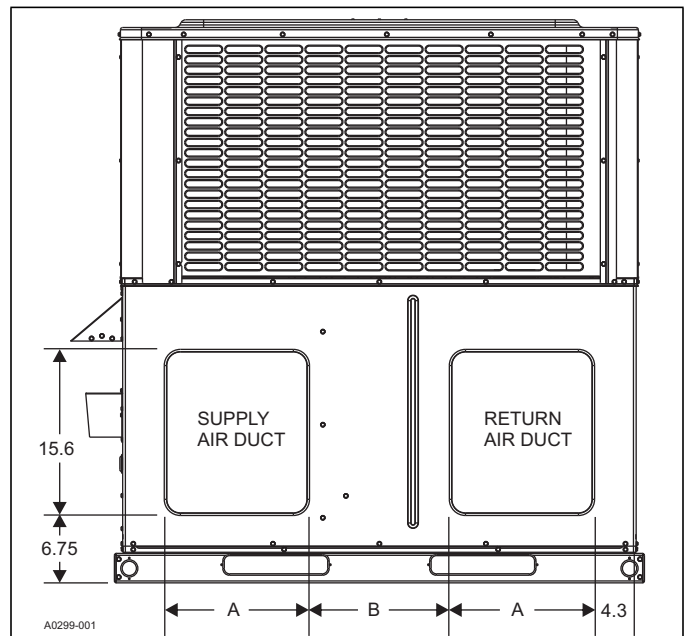
Model	Dimensions (in inches)		
	A	B	C
PHG4A24	51-1/4	35-3/4	47
PHG4A30	51-1/4	35-3/4	49
PHG4B36	51-1/4	45-3/4	49
PHG4B42	51-1/4	45-3/4	49
PHG4B48	51-1/4	45-3/4	53
PHG4B60	51-1/4	45-3/4	55

BOTTOM DUCT DIMENSIONS (Inches)



Model	A	B	C	D	E	F
24, 30	10	21.5	5	4.5	47.5	32
36, 42, 48, 60	14	13.5	5	3.5	47.5	42

REAR DUCT DIMENSIONS (Inches)



Model	A	B
24, 30	9.6	22
36, 42, 48, 60	13.6	14

Subject to change without notice. Published in U.S.A.
 Copyright © 2019 by Johnson Controls. All rights reserved.

5127528-USD-D-0819
 Supersedes: 5127528-USD-C-0417

York International Corp.
 5005 York Drive
 Norman, OK 73069